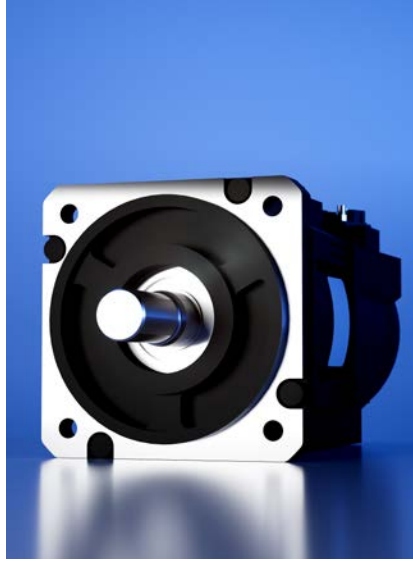
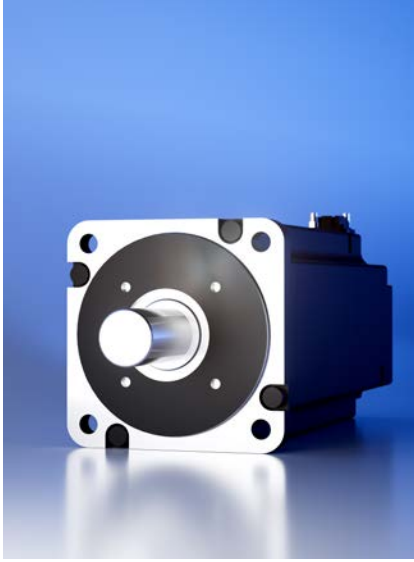


YASKAWA



Sigma-X Sales Catalog



SGMXA motors

Motor & drive combinations **6**

Ratings & specifications **20**

Dimensions **24**

SGMXG motors

Motor & drive combinations **12**

Ratings & specifications **26**

Dimensions **32**

SGMXJ motors

Motor & drive combinations **18**

Ratings & specifications **34**

Dimensions **36**

CONT

Rotary servo motors **4**

Servopacks **38**

Advanced safety modules **54**

Option modules **55**



SGDXS servopacks

Models and accessories
(200V) **40**

Models and accessories
(400V) **46**

SGDXW servopacks

Models and accessories
(200V) **44**

SGDXT servopacks

Models and accessories
(200V) **44**

EVENTS

Encoder cables **56**

Power cables **57**

Brake cables **60**

Rotary servo motors

200 V

Model designation

SGMXG - 09 A W A 6 1 A 1



1	Servo motor type
SGMXA	Medium inertia, high speed
SGMXG	Medium inertia, low speed
SGMXJ	Low inertia, high speed

2	Capacity		
Type	SGMXA (3000 min ⁻¹)	SGMXG (1500 min ⁻¹)	SGMXJ (3000 min ⁻¹)
A5	50 W	–	50 W
01	100 W	–	100 W
C2	150 W	–	150 W
02	200 W	–	200 W
03	–	300 W	–
04	400 W	–	400 W
05	–	450 W	–
06	600 W	–	600 W
08	750 W	–	750 W
09	–	850 W	–
10	1,000 W	–	–
13	–	1,300 W	–
15	1,500 W	–	–

3	Power supply voltage
A	200 VAC

4	Serial encoder
U *	26-bit absolute encoder
W	26-bit batteryless absolute encoder

5	Design revision order
A	Standard

6	Shaft end
2 *	Straight without key
6	Straight with key and tap

7	Options
1	Without options
C	With holding brake (24 VDC)

8	Destination
A	Standard

9	Ancillary Specification
1	Standard
3	Encoder with functional safety

* On request.

Rotary servo motors

400 V

Model designation

SGMXG - 09 D H A 6 F A 1

① ② ③ ④ ⑤ ⑥ ⑦ ⑧ ⑨

1	Servo motor type
SGMXA	Medium inertia, high speed
SGMXG	Medium inertia, low speed

2	Capacity	
Type	SGMXA (3000 min ⁻¹)	SGMXG (1500 min ⁻¹)
05	–	450 W
09	–	850 W
13	–	1,300 W
15	1,500 W	–
20	2,000 W	1,800 W
25	2,500 W	–
30	3,000 W	2,900 W
40	4,000 W	–
44	–	4,400 W
50	5,000 W	–
55	–	5,500 W
75	–	7,500 W
1A	–	11,000 W
1E	–	15,000 W

3	Power supply voltage
D	400 VAC

4	Serial encoder
H * ¹	26-bit compact batteryless absolute encoder
U *	26-bit absolute encoder
W * ²	26-bit batteryless absolute encoder

5	Design revision order
A	Standard

6	Shaft end	
Type	SGMXA (3000 min ⁻¹)	SGMXG (1500 min ⁻¹)
2 *	Straight without key	Straight without key (models 05 ... 20)
6	Straight with key and tap	
8 *	–	Straight without key, with tap (models 30 ... 1E)

7	Options
F	With dust seal
H	With dust seal With holding brake (24 VDC)

8	Destination
A	Standard

9	Ancillary Specification
1	Standard
3	Encoder with functional safety

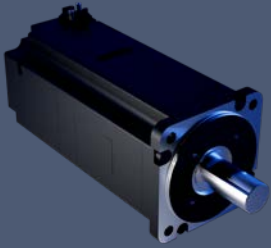
* On request.

*¹ Only for ancillary specification "Standard"

*² Only for ancillary specification "Encoder with functional safety"

Servo motor and drive combinations

Rotary servo motor			Encoder	Shaft	Options	Ancillary	
Rated torque [Nm]	Capacity [W]	Model	Batteryless absolute, 26-bit	Straight with key & tap	Holding brake	Standard	Functional Safety
0.159	50	SGMXA-A5AWA61A1	x	x		x	
0.159	50	SGMXA-A5AWA61A3	x	x			x
0.159	50	SGMXA-A5AWA6CA1	x	x	x	x	
0.159	50	SGMXA-A5AWA6CA3	x	x	x		x
0.318	100	SGMXA-01AWA61A1	x	x		x	
0.318	100	SGMXA-01AWA61A3	x	x			x
0.318	100	SGMXA-01AWA6CA1	x	x	x	x	
0.318	100	SGMXA-01AWA6CA3	x	x	x		x
0.477	150	SGMXA-C2AWA61A1	x	x		x	
0.477	150	SGMXA-C2AWA61A3	x	x			x
0.477	150	SGMXA-C2AWA6CA1	x	x	x	x	
0.477	150	SGMXA-C2AWA6CA3	x	x	x		x
0.637	200	SGMXA-02AWA61A1	x	x		x	
0.637	200	SGMXA-02AWA61A3	x	x			x
0.637	200	SGMXA-02AWA6CA1	x	x	x	x	
0.637	200	SGMXA-02AWA6CA3	x	x	x		x
1.27	400	SGMXA-04AWA61A1	x	x		x	
1.27	400	SGMXA-04AWA61A3	x	x			x
1.27	400	SGMXA-04AWA6CA1	x	x	x	x	
1.27	400	SGMXA-04AWA6CA3	x	x	x		x
1.91	600	SGMXA-06AWA61A1	x	x		x	
1.91	600	SGMXA-06AWA61A3	x	x			x
1.91	600	SGMXA-06AWA6CA1	x	x	x	x	
1.91	600	SGMXA-06AWA6CA3	x	x	x		x



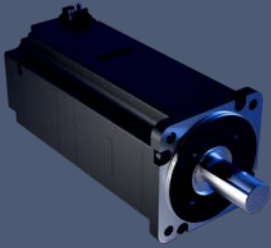
200 V

SGMXA (3000 min⁻¹),
26-bit absolute encoder

	Motor cables			Compatible servo drive		
	Encoder cable	Power cable	Brake cable	Single axis [SGDXS-□]	Dual axis [SGDXW-□]	Triple axis [SGDXT-□]
JWSP-XP2IF1-□□-G7	JWSP-XMA5NF1-□□-M7	-	R70A	1R6A	1R6A	
JWSP-XP2IF1-□□-G7	JWSP-XMA5NF1-□□-M7	-	R70A	1R6A	1R6A	
JWSP-XP2IF1-□□-G7	JWSP-XMA5BF1-□□-M7	-	R70A	1R6A	1R6A	
JWSP-XP2IF1-□□-G7	JWSP-XMA5BF1-□□-M7	-	R70A	1R6A	1R6A	
JWSP-XP2IF1-□□-G7	JWSP-XMA5NF1-□□-M7	-	R90A	1R6A	1R6A	
JWSP-XP2IF1-□□-G7	JWSP-XMA5NF1-□□-M7	-	R90A	1R6A	1R6A	
JWSP-XP2IF1-□□-G7	JWSP-XMA5BF1-□□-M7	-	R90A	1R6A	1R6A	
JWSP-XP2IF1-□□-G7	JWSP-XMA5BF1-□□-M7	-	R90A	1R6A	1R6A	
JWSP-XP2IF1-□□-G7	JWSP-XMA5NF1-□□-M7	-	1R6A	1R6A	1R6A	
JWSP-XP2IF1-□□-G7	JWSP-XMA5NF1-□□-M7	-	1R6A	1R6A	1R6A	
JWSP-XP2IF1-□□-G7	JWSP-XMA5BF1-□□-M7	-	1R6A	1R6A	1R6A	
JWSP-XP2IF1-□□-G7	JWSP-XMA5BF1-□□-M7	-	1R6A	1R6A	1R6A	
JWSP-XP2IF1-□□-G7	JWSP-XMA5NF1-□□-M7	-	1R6A	1R6A	1R6A	
JWSP-XP2IF1-□□-G7	JWSP-XMA5NF1-□□-M7	-	1R6A	1R6A	1R6A	
JWSP-XP2IF1-□□-G7	JWSP-XMA5BF1-□□-M7	-	1R6A	1R6A	1R6A	
JWSP-XP2IF1-□□-G7	JWSP-XMA5BF1-□□-M7	-	1R6A	1R6A	1R6A	
JWSP-XP2IF1-□□-G7	JWSP-XMA5NF1-□□-M7	-	2R8A	2R8A	2R8A	
JWSP-XP2IF1-□□-G7	JWSP-XMA5NF1-□□-M7	-	2R8A	2R8A	2R8A	
JWSP-XP2IF1-□□-G7	JWSP-XMA5BF1-□□-M7	-	2R8A	2R8A	2R8A	
JWSP-XP2IF1-□□-G7	JWSP-XMA5BF1-□□-M7	-	2R8A	2R8A	2R8A	
JWSP-XP2IF1-□□-G7	JWSP-XMA5NF1-□□-M7	-	5R5A	5R5A	-	
JWSP-XP2IF1-□□-G7	JWSP-XMA5NF1-□□-M7	-	5R5A	5R5A	-	
JWSP-XP2IF1-□□-G7	JWSP-XMA5BF1-□□-M7	-	5R5A	5R5A	-	
JWSP-XP2IF1-□□-G7	JWSP-XMA5BF1-□□-M7	-	5R5A	5R5A	-	

Servo motor and drive combinations

Rotary servo motor			Encoder	Shaft	Options	Ancillary	
Rated torque [Nm]	Capacity [W]	Model	Batteryless absolute, 26-bit	Straight with key & tap	Holding brake	Standard	Functional Safety
2.39	750	SGMXA-08AWA61A1	x	x		x	
2.39	750	SGMXA-08AWA61A3	x	x			x
2.39	750	SGMXA-08AWA6CA1	x	x	x	x	
2.39	750	SGMXA-08AWA6CA3	x	x	x		x
3.18	1,000	SGMXA-10AWA61A1	x	x		x	
3.18	1,000	SGMXA-10AWA61A3	x	x			x
3.18	1,000	SGMXA-10AWA6CA1	x	x	x	x	
3.18	1,000	SGMXA-10AWA6CA3	x	x	x		x
4.90	1,500	SGMXA-15AWA61A1	x	x		x	
4.90	1,500	SGMXA-15AWA61A3	x	x			x
4.90	1,500	SGMXA-15AWA6CA1	x	x	x	x	
4.90	1,500	SGMXA-15AWA6CA3	x	x	x		x



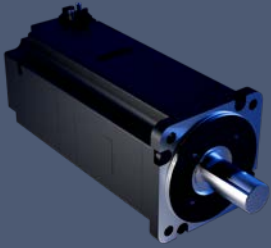
200 V

SGMXA (3000 min⁻¹),
26-bit absolute encoder

	Motor cables			Compatible servo drive		
	Encoder cable	Power cable	Brake cable	Single axis [SGDXS-□]	Dual axis [SGDXW-□]	Triple axis [SGDXT-□]
JWSP-XP2IF1-□□-G7	JWSP-XM08NF1-□□-M7	-	5R5A	5R5A	-	
JWSP-XP2IF1-□□-G7	JWSP-XM08NF1-□□-M7	-	5R5A	5R5A	-	
JWSP-XP2IF1-□□-G7	JWSP-XM08BF1-□□-M7	-	5R5A	5R5A	-	
JWSP-XP2IF1-□□-G7	JWSP-XM08BF1-□□-M7	-	5R5A	5R5A	-	
JWSP-XP2IF1-□□-G7	JWSP-XM08NF1-□□-M7	-	120A	-	-	
JWSP-XP2IF1-□□-G7	JWSP-XM08NF1-□□-M7	-	120A	-	-	
JWSP-XP2IF1-□□-G7	JWSP-XM08BF1-□□-M7	-	120A	-	-	
JWSP-XP2IF1-□□-G7	JWSP-XM08BF1-□□-M7	-	120A	-	-	
JWSP-XP2IF2-□□-G7	JWSP-XM15NFL-□□-G7	-	120A	-	-	
JWSP-XP2IF2-□□-G7	JWSP-XM15NFL-□□-G7	-	120A	-	-	
JWSP-XP2IF2-□□-G7	JWSP-XM15NFL-□□-G7	JWSP-XB0FL-□□-G7	120A	-	-	
JWSP-XP2IF2-□□-G7	JWSP-XM15NFL-□□-G7	JWSP-XB0FL-□□-G7	120A	-	-	

Servo motor and drive combinations

Rotary servo motor			Encoder		Shaft	Options		Ancillary	
Rated torque [Nm]	Capacity [W]	Model	Battery-less absolute, 26-bit	Compact battery-less absolute, 26-bit	Straight with key & tap	Dust seal	Holding brake	Standard	Functional Safety
0.159	1,500	SGMXA-15DHA6FA1		x	x	x		x	
0.159	1,500	SGMXA-15DHA6HA1		x	x	x	x	x	
0.159	1,500	SGMXA-15DWA6FA3	x		x	x			x
0.159	1,500	SGMXA-15DWA6HA3	x		x	x	x		x
0.318	2,000	SGMXA-20DHA6FA1		x	x	x		x	
0.318	2,000	SGMXA-20DHA6HA1		x	x	x	x	x	
0.318	2,000	SGMXA-20DWA6FA3	x		x	x			x
0.318	2,000	SGMXA-20DWA6HA3	x		x	x	x		x
0.477	2,500	SGMXA-25DHA6FA1		x	x	x		x	
0.477	2,500	SGMXA-25DHA6HA1		x	x	x	x	x	
0.477	2,500	SGMXA-25DWA6FA3	x		x	x			x
0.477	2,500	SGMXA-25DWA6HA3	x		x	x	x		x
0.637	3,000	SGMXA-30DHA6FA1		x	x	x		x	
0.637	3,000	SGMXA-30DHA6HA1		x	x	x	x	x	
0.637	3,000	SGMXA-30DWA6FA3	x		x	x			x
0.637	3,000	SGMXA-30DWA6HA3	x		x	x	x		x
1.27	4,000	SGMXA-40DHA6FA1		x	x	x		x	
1.27	4,000	SGMXA-40DHA6HA1		x	x	x	x	x	
1.27	4,000	SGMXA-40DWA6FA3	x		x	x			x
1.27	4,000	SGMXA-40DWA6HA3	x		x	x	x		x
1.91	5,000	SGMXA-50DHA6FA1		x	x	x		x	
1.91	5,000	SGMXA-50DHA6HA1		x	x	x	x	x	
1.91	5,000	SGMXA-50DWA6FA3	x		x	x			x
1.91	5,000	SGMXA-50DWA6HA3	x		x	x	x		x



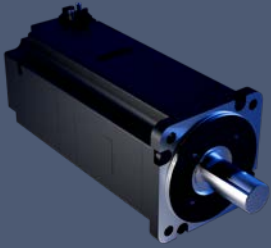
400 V

SGMXA (3000 min⁻¹),
26-bit absolute encoder

	Motor cables			Compatible servo drive		
	Encoder cable	Power cable	Brake cable	Single axis [SGDXS-□]	Dual axis [SGDXW-□]	Triple axis [SGDXT-□]
JWSP-XP2IF2-□□-G7	JWSP-XM20NFL-□□-D7	-	5R4D	-	-	
JWSP-XP2IF2-□□-G7	JWSP-XM20NFL-□□-D7	JWSP-XB0FL-□□-G7	5R4D	-	-	
JWSP-XP2IF2-□□-G7	JWSP-XM20NFL-□□-D7	-	5R4D	-	-	
JWSP-XP2IF2-□□-G7	JWSP-XM20NFL-□□-D7	JWSP-XB0FL-□□-G7	5R4D	-	-	
JWSP-XP2IF2-□□-G7	JWSP-XM20NFL-□□-D7	-	8R4D	-	-	
JWSP-XP2IF2-□□-G7	JWSP-XM20NFL-□□-D7	JWSP-XB0FL-□□-G7	8R4D	-	-	
JWSP-XP2IF2-□□-G7	JWSP-XM20NFL-□□-D7	-	8R4D	-	-	
JWSP-XP2IF2-□□-G7	JWSP-XM20NFL-□□-D7	JWSP-XB0FL-□□-G7	8R4D	-	-	
JWSP-XP2IF2-□□-G7	JWSP-XM20NFL-□□-D7	-	120D	-	-	
JWSP-XP2IF2-□□-G7	JWSP-XM20NFL-□□-D7	JWSP-XB0FL-□□-G7	120D	-	-	
JWSP-XP2IF2-□□-G7	JWSP-XM20NFL-□□-D7	-	120D	-	-	
JWSP-XP2IF2-□□-G7	JWSP-XM20NFL-□□-D7	JWSP-XB0FL-□□-G7	120D	-	-	
JWSP-XP2IF2-□□-G7	JWSP-XM30NFL-□□-D7	-	120D	-	-	
JWSP-XP2IF2-□□-G7	JWSP-XM30NFL-□□-D7	JWSP-XB0FL-□□-G7	120D	-	-	
JWSP-XP2IF2-□□-G7	JWSP-XM30NFL-□□-D7	-	120D	-	-	
JWSP-XP2IF2-□□-G7	JWSP-XM30NFL-□□-D7	JWSP-XB0FL-□□-G7	120D	-	-	
JWSP-XP2IF2-□□-G7	JWSP-XM30NFL-□□-D7	-	170D	-	-	
JWSP-XP2IF2-□□-G7	JWSP-XM30NFL-□□-D7	JWSP-XB0FL-□□-G7	170D	-	-	
JWSP-XP2IF2-□□-G7	JWSP-XM30NFL-□□-D7	-	170D	-	-	
JWSP-XP2IF2-□□-G7	JWSP-XM30NFL-□□-D7	JWSP-XB0FL-□□-G7	170D	-	-	
JWSP-XP2IF2-□□-G7	JWSP-XM30NFL-□□-D7	-	170D	-	-	
JWSP-XP2IF2-□□-G7	JWSP-XM30NFL-□□-D7	JWSP-XB0FL-□□-G7	170D	-	-	
JWSP-XP2IF2-□□-G7	JWSP-XM30NFL-□□-D7	-	170D	-	-	
JWSP-XP2IF2-□□-G7	JWSP-XM30NFL-□□-D7	JWSP-XB0FL-□□-G7	170D	-	-	

Servo motor and drive combinations

Rotary servo motor			Encoder	Shaft	Options	Ancillary	
Rated torque [Nm]	Capacity [W]	Model	Batteryless absolute, 26-bit	Straight with key & tap	Holding brake	Standard	Functional Safety
1.96	300	SGMXG-03AWA61A1	x	x		x	
1.96	300	SGMXG-03AWA61A3	x	x			x
1.96	300	SGMXG-03AWA6CA1	x	x	x	x	
1.96	300	SGMXG-03AWA6CA3	x	x	x		x
2.86	450	SGMXG-05AWA61A1	x	x		x	
2.86	450	SGMXG-05AWA61A3	x	x			x
2.86	450	SGMXG-05AWA6CA1	x	x	x	x	
2.86	450	SGMXG-05AWA6CA3	x	x	x		x
5.39	850	SGMXG-09AWA61A1	x	x		x	
5.39	850	SGMXG-09AWA61A3	x	x			x
5.39	850	SGMXG-09AWA6CA1	x	x	x	x	
5.39	850	SGMXG-09AWA6CA3	x	x	x		x
8.34	1,300	SGMXG-13AWA61A1	x	x		x	
8.34	1,300	SGMXG-13AWA61A3	x	x			x
8.34	1,300	SGMXG-13AWA6CA1	x	x	x	x	
8.34	1,300	SGMXG-13AWA6CA3	x	x	x		x



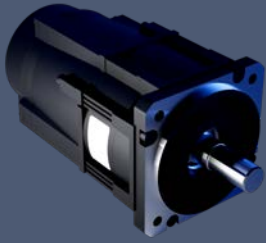
200 V

SGMXG (1500 min⁻¹),
26-bit absolute encoder

	Motor cables			Compatible servo drive		
	Encoder cable	Power cable	Brake cable	Single axis [SGDXS-□]	Dual axis [SGDXW-□]	Triple axis [SGDXT-□]
JWSP-XP2IF1-□□-G7	JZSP-CVM21-□□-E-G7	-	2R8A	2R8A	2R8A	
JWSP-XP2IF1-□□-G7	JZSP-CVM21-□□-E-G7	-	2R8A	2R8A	2R8A	
JWSP-XP2IF1-□□-G7	JZSP-CVM41-□□-E-G7	-	2R8A	2R8A	2R8A	
JWSP-XP2IF1-□□-G7	JZSP-CVM41-□□-E-G7	-	2R8A	2R8A	2R8A	
JWSP-XP2IF1-□□-G7	JZSP-CVM21-□□-E-G7	-	5R5A	5R5A	-	
JWSP-XP2IF1-□□-G7	JZSP-CVM21-□□-E-G7	-	5R5A	5R5A	-	
JWSP-XP2IF1-□□-G7	JZSP-CVM41-□□-E-G7	-	5R5A	5R5A	-	
JWSP-XP2IF1-□□-G7	JZSP-CVM41-□□-E-G7	-	5R5A	5R5A	-	
JWSP-XP2IF2-□□-G7	JWSP-XM15NFL-□□-G7	-	7R6A	7R6A	-	
JWSP-XP2IF2-□□-G7	JWSP-XM15NFL-□□-G7	-	7R6A	7R6A	-	
JWSP-XP2IF2-□□-G7	JWSP-XM15NFL-□□-G7	JWSP-XB0FL-□□-G7	7R6A	7R6A	-	
JWSP-XP2IF2-□□-G7	JWSP-XM15NFL-□□-G7	JWSP-XB0FL-□□-G7	7R6A	7R6A	-	
JWSP-XP2IF2-□□-G7	JWSP-XM15NFL-□□-G7	-	120A	-	-	
JWSP-XP2IF2-□□-G7	JWSP-XM15NFL-□□-G7	-	120A	-	-	
JWSP-XP2IF2-□□-G7	JWSP-XM15NFL-□□-G7	JWSP-XB0FL-□□-G7	120A	-	-	
JWSP-XP2IF2-□□-G7	JWSP-XM15NFL-□□-G7	JWSP-XB0FL-□□-G7	120A	-	-	

Servo motor and drive combinations

Rotary servo motor			Encoder		Shaft	Options		Ancillary	
Rated torque [Nm]	Capacity [W]	Model	Battery-less absolute, 26-bit	Compact battery-less absolute, 26-bit	Straight with key & tap	Dust seal	Holding brake	Standard	Functional Safety
2.86	450	SGMXG-05DHA6FA1		x	x	x		x	
2.86	450	SGMXG-05DHA6HA1		x	x	x	x	x	
2.86	450	SGMXG-05DWA6FA3	x		x	x			x
2.86	450	SGMXG-05DWA6HA3	x		x	x	x		x
5.39	850	SGMXG-09DHA6FA1		x	x	x		x	
5.39	850	SGMXG-09DHA6HA1		x	x	x	x	x	
5.39	850	SGMXG-09DWA6FA3	x		x	x			x
5.39	850	SGMXG-09DWA6HA3	x		x	x	x		x
8.34	1,300	SGMXG-13DHA6FA1		x	x	x		x	
8.34	1,300	SGMXG-13DHA6HA1		x	x	x	x	x	
8.34	1,300	SGMXG-13DWA6FA3	x		x	x			x
8.34	1,300	SGMXG-13DWA6HA3	x		x	x	x		x
11.5	1,800	SGMXG-20DHA6FA1		x	x	x		x	
11.5	1,800	SGMXG-20DHA6HA1		x	x	x	x	x	
11.5	1,800	SGMXG-20DWA6FA3	x		x	x			x
11.5	1,800	SGMXG-20DWA6HA3	x		x	x	x		x
18.6	2,900	SGMXG-30DHA6FA1		x	x	x		x	
18.6	2,900	SGMXG-30DHA6HA1		x	x	x	x	x	
18.6	2,900	SGMXG-30DWA6FA3	x		x	x			x
18.6	2,900	SGMXG-30DWA6HA3	x		x	x	x		x
28.4	4,400	SGMXG-44DHA6FA1		x	x	x		x	
28.4	4,400	SGMXG-44DHA6HA1		x	x	x	x	x	
28.4	4,400	SGMXG-44DWA6FA3	x		x	x			x
28.4	4,400	SGMXG-44DWA6HA3	x		x	x	x		x
35.0	5,500	SGMXG-55DHA6FA1		x	x	x		x	
35.0	5,500	SGMXG-55DHA6HA1		x	x	x	x	x	
35.0	5,500	SGMXG-55DWA6FA3	x		x	x			x
35.0	5,500	SGMXG-55DWA6HA3	x		x	x	x		x



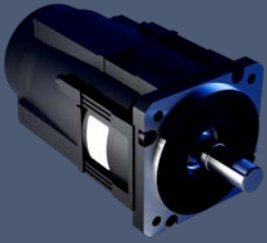
400 V

SGMXG (1500 min⁻¹),
26-bit absolute encoder

	Motor cables			Compatible servo drive		
	Encoder cable	Power cable	Brake cable	Single axis [SGDXS-□]	Dual axis [SGDXW-□]	Triple axis [SGDXT-□]
JWSP-XP2IF1-□□-G7	JZSP-CVM21-□□-E-G7	-	1R9D	-	-	
JWSP-XP2IF1-□□-G7	JZSP-CVM41-□□-E-G7	-	1R9D	-	-	
JWSP-XP2IF1-□□-G7	JZSP-CVM21-□□-E-G7	-	1R9D	-	-	
JWSP-XP2IF1-□□-G7	JZSP-CVM41-□□-E-G7	-	1R9D	-	-	
JWSP-XP2IF2-□□-G7	JWSP-XM15NFL-□□-D7	-	3R5D	-	-	
JWSP-XP2IF2-□□-G7	JWSP-XM15NFL-□□-D7	JWSP-XB0FL-□□-G7	3R5D	-	-	
JWSP-XP2IF2-□□-G7	JWSP-XM15NFL-□□-D7	-	3R5D	-	-	
JWSP-XP2IF2-□□-G7	JWSP-XM15NFL-□□-D7	JWSP-XB0FL-□□-G7	3R5D	-	-	
JWSP-XP2IF2-□□-G7	JWSP-XM20NFL-□□-D7	-	5R4D	-	-	
JWSP-XP2IF2-□□-G7	JWSP-XM20NFL-□□-D7	JWSP-XB0FL-□□-G7	5R4D	-	-	
JWSP-XP2IF2-□□-G7	JWSP-XM20NFL-□□-D7	-	5R4D	-	-	
JWSP-XP2IF2-□□-G7	JWSP-XM20NFL-□□-D7	JWSP-XB0FL-□□-G7	5R4D	-	-	
JWSP-XP2IF2-□□-G7	JWSP-XM20NFL-□□-D7	-	8R4D	-	-	
JWSP-XP2IF2-□□-G7	JWSP-XM20NFL-□□-D7	JWSP-XB0FL-□□-G7	8R4D	-	-	
JWSP-XP2IF2-□□-G7	JWSP-XM20NFL-□□-D7	-	8R4D	-	-	
JWSP-XP2IF2-□□-G7	JWSP-XM20NFL-□□-D7	JWSP-XB0FL-□□-G7	8R4D	-	-	
JWSP-XP2IF2-□□-G7	JWSP-XM30NFL-□□-D7	-	120D	-	-	
JWSP-XP2IF2-□□-G7	JWSP-XM30NFL-□□-D7	JWSP-XB0FL-□□-G7	120D	-	-	
JWSP-XP2IF2-□□-G7	JWSP-XM30NFL-□□-D7	-	120D	-	-	
JWSP-XP2IF2-□□-G7	JWSP-XM30NFL-□□-D7	JWSP-XB0FL-□□-G7	120D	-	-	
JWSP-XP2IF2-□□-G7	JWSP-XM30NFL-□□-D7	-	170D	-	-	
JWSP-XP2IF2-□□-G7	JWSP-XM30NFL-□□-D7	JWSP-XB0FL-□□-G7	170D	-	-	
JWSP-XP2IF2-□□-G7	JWSP-XM30NFL-□□-D7	-	170D	-	-	
JWSP-XP2IF2-□□-G7	JWSP-XM30NFL-□□-D7	JWSP-XB0FL-□□-G7	170D	-	-	
JWSP-XP2IF2-□□-G7	JWSP-XM55NFL-□□-D7	-	210D	-	-	
JWSP-XP2IF2-□□-G7	JWSP-XM55NFL-□□-D7	JWSP-XB0FL-□□-G7	210D	-	-	
JWSP-XP2IF2-□□-G7	JWSP-XM55NFL-□□-D7	-	210D	-	-	
JWSP-XP2IF2-□□-G7	JWSP-XM55NFL-□□-D7	JWSP-XB0FL-□□-G7	210D	-	-	

Servo motor and drive combinations

Rotary servo motor			Encoder		Shaft	Options		Ancillary	
Rated torque [Nm]	Capacity [W]	Model	Battery-less absolute, 26-bit	Compact battery-less absolute, 26-bit	Straight with key & tap	Dust seal	Holding brake	Standard	Functional Safety
48.0	7,500	SGMXG-75DHA6FA1		x	x	x		x	
48.0	7,500	SGMXG-75DHA6HA1		x	x	x	x	x	
48.0	7,500	SGMXG-75DWA6FA3	x		x	x			x
48.0	7,500	SGMXG-75DWA6HA3	x		x	x	x		x
70.0	11,000	SGMXG-1ADHA6FA1		x	x	x		x	
70.0	11,000	SGMXG-1ADHA6HA1		x	x	x	x	x	
70.0	11,000	SGMXG-1ADWA6FA3	x		x	x			x
70.0	11,000	SGMXG-1ADWA6HA3	x		x	x	x		x
95.4	15,000	SGMXG-1EDHA6FA1		x	x	x		x	
95.4	15,000	SGMXG-1EDHA6HA1		x	x	x	x	x	
95.4	15,000	SGMXG-1EDWA6FA3	x		x	x			x
95.4	15,000	SGMXG-1EDWA6HA3	x		x	x	x		x



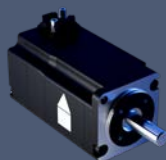
400 V

SGMXG (1500 min⁻¹),
26-bit absolute encoder

	Motor cables			Compatible servo drive		
	Encoder cable	Power cable	Brake cable	Single axis [SGDXS-□]	Dual axis [SGDXW-□]	Triple axis [SGDXT-□]
	JWSP-XP2IF2-□□-G7	JWSP-XM5BNFL-□□-D7	-	260D	-	-
	JWSP-XP2IF2-□□-G7	JWSP-XM5BNFL-□□-D7	JWSP-XB0FL-□□-G7	260D	-	-
	JWSP-XP2IF2-□□-G7	JWSP-XM5BNFL-□□-D7	-	260D	-	-
	JWSP-XP2IF2-□□-G7	JWSP-XM5BNFL-□□-D7	JWSP-XB0FL-□□-G7	260D	-	-
	JWSP-XP2IF2-□□-G7	JWSP-XM1ANFL-□□-D7	-	280D	-	-
	JWSP-XP2IF2-□□-G7	JWSP-XM1ANFL-□□-D7	JWSP-XB0FL-□□-G7	280D	-	-
	JWSP-XP2IF2-□□-G7	JWSP-XM1ANFL-□□-D7	-	280D	-	-
	JWSP-XP2IF2-□□-G7	JWSP-XM1ANFL-□□-D7	JWSP-XB0FL-□□-G7	280D	-	-
	JWSP-XP2IF2-□□-G7	JWSP-XM1ANFL-□□-D7	-	370D	-	-
	JWSP-XP2IF2-□□-G7	JWSP-XM1ANFL-□□-D7	JWSP-XB0FL-□□-G7	370D	-	-
	JWSP-XP2IF2-□□-G7	JWSP-XM1ANFL-□□-D7	-	370D	-	-
	JWSP-XP2IF2-□□-G7	JWSP-XM1ANFL-□□-D7	JWSP-XB0FL-□□-G7	370D	-	-

Servo motor and drive combinations

Rotary servo motor			Encoder	Shaft	Options	Ancillary	
Rated torque [Nm]	Capacity [W]	Model	Batteryless absolute, 26-bit	Straight with key & tap	Holding brake	Standard	Functional Safety
0.159	50	SGMXJ-A5AWA61A1	x	x		x	
0.159	50	SGMXJ-A5AWA61A3	x	x			x
0.159	50	SGMXJ-A5AWA6CA1	x	x	x	x	
0.159	50	SGMXJ-A5AWA6CA3	x	x	x		x
0.318	100	SGMXJ-01AWA61A1	x	x		x	
0.318	100	SGMXJ-01AWA61A3	x	x			x
0.318	100	SGMXJ-01AWA6CA1	x	x	x	x	
0.318	100	SGMXJ-01AWA6CA3	x	x	x		x
0.477	150	SGMXJ-C2AWA61A1	x	x		x	
0.477	150	SGMXJ-C2AWA61A3	x	x			x
0.477	150	SGMXJ-C2AWA6CA1	x	x	x	x	
0.477	150	SGMXJ-C2AWA6CA3	x	x	x		x
0.637	200	SGMXJ-02AWA61A1	x	x		x	
0.637	200	SGMXJ-02AWA61A3	x	x			x
0.637	200	SGMXJ-02AWA6CA1	x	x	x	x	
0.637	200	SGMXJ-02AWA6CA3	x	x	x		x
1.27	400	SGMXJ-04AWA61A1	x	x		x	
1.27	400	SGMXJ-04AWA61A3	x	x			x
1.27	400	SGMXJ-04AWA6CA1	x	x	x	x	
1.27	400	SGMXJ-04AWA6CA3	x	x	x		x
1.91	600	SGMXJ-06AWA61A1	x	x		x	
1.91	600	SGMXJ-06AWA61A3	x	x			x
1.91	600	SGMXJ-06AWA6CA1	x	x	x	x	
1.91	600	SGMXJ-06AWA6CA3	x	x	x		x
2.39	750	SGMXJ-08AWA61A1	x	x		x	
2.39	750	SGMXJ-08AWA61A3	x	x			x
2.39	750	SGMXJ-08AWA6CA1	x	x	x	x	
2.39	750	SGMXJ-08AWA6CA3	x	x	x		x



SGMXJ (3000 min⁻¹), 26-bit absolute encoder

	Motor cables			Compatible servo drive		
	Encoder cable	Power cable	Brake cable	Single axis [SGDXS-□]	Dual axis [SGDXW-□]	Triple axis [SGDXT-□]
JWSP-XP2IF1-□□-G7	JWSP-XMA5NF1-□□-M7	-	R70A	1R6A	1R6A	
JWSP-XP2IF1-□□-G7	JWSP-XMA5NF1-□□-M7	-	R70A	1R6A	1R6A	
JWSP-XP2IF1-□□-G7	JWSP-XMA5BF1-□□-M7	-	R70A	1R6A	1R6A	
JWSP-XP2IF1-□□-G7	JWSP-XMA5BF1-□□-M7	-	R70A	1R6A	1R6A	
JWSP-XP2IF1-□□-G7	JWSP-XMA5NF1-□□-M7	-	R90A	1R6A	1R6A	
JWSP-XP2IF1-□□-G7	JWSP-XMA5NF1-□□-M7	-	R90A	1R6A	1R6A	
JWSP-XP2IF1-□□-G7	JWSP-XMA5BF1-□□-M7	-	R90A	1R6A	1R6A	
JWSP-XP2IF1-□□-G7	JWSP-XMA5BF1-□□-M7	-	R90A	1R6A	1R6A	
JWSP-XP2IF1-□□-G7	JWSP-XMA5NF1-□□-M7	-	1R6A	1R6A	1R6A	
JWSP-XP2IF1-□□-G7	JWSP-XMA5NF1-□□-M7	-	1R6A	1R6A	1R6A	
JWSP-XP2IF1-□□-G7	JWSP-XMA5BF1-□□-M7	-	1R6A	1R6A	1R6A	
JWSP-XP2IF1-□□-G7	JWSP-XMA5BF1-□□-M7	-	1R6A	1R6A	1R6A	
JWSP-XP2IF1-□□-G7	JWSP-XMA5NF1-□□-M7	-	1R6A	1R6A	1R6A	
JWSP-XP2IF1-□□-G7	JWSP-XMA5NF1-□□-M7	-	1R6A	1R6A	1R6A	
JWSP-XP2IF1-□□-G7	JWSP-XMA5BF1-□□-M7	-	1R6A	1R6A	1R6A	
JWSP-XP2IF1-□□-G7	JWSP-XMA5BF1-□□-M7	-	1R6A	1R6A	1R6A	
JWSP-XP2IF1-□□-G7	JWSP-XMA5NF1-□□-M7	-	2R8A	2R8A	2R8A	
JWSP-XP2IF1-□□-G7	JWSP-XMA5NF1-□□-M7	-	2R8A	2R8A	2R8A	
JWSP-XP2IF1-□□-G7	JWSP-XMA5BF1-□□-M7	-	2R8A	2R8A	2R8A	
JWSP-XP2IF1-□□-G7	JWSP-XMA5BF1-□□-M7	-	2R8A	2R8A	2R8A	
JWSP-XP2IF1-□□-G7	JWSP-XMA5NF1-□□-M7	-	5R5A	5R5A	-	
JWSP-XP2IF1-□□-G7	JWSP-XMA5NF1-□□-M7	-	5R5A	5R5A	-	
JWSP-XP2IF1-□□-G7	JWSP-XMA5BF1-□□-M7	-	5R5A	5R5A	-	
JWSP-XP2IF1-□□-G7	JWSP-XMA5BF1-□□-M7	-	5R5A	5R5A	-	
JWSP-XP2IF1-□□-G7	JWSP-XM08NF1-□□-M7	-	5R5A	5R5A	-	
JWSP-XP2IF1-□□-G7	JWSP-XM08NF1-□□-M7	-	5R5A	5R5A	-	
JWSP-XP2IF1-□□-G7	JWSP-XM08BF1-□□-M7	-	5R5A	5R5A	-	
JWSP-XP2IF1-□□-G7	JWSP-XM08BF1-□□-M7	-	5R5A	5R5A	-	

Ratings and specifications

200 V

SGMXA (3000 min⁻¹)

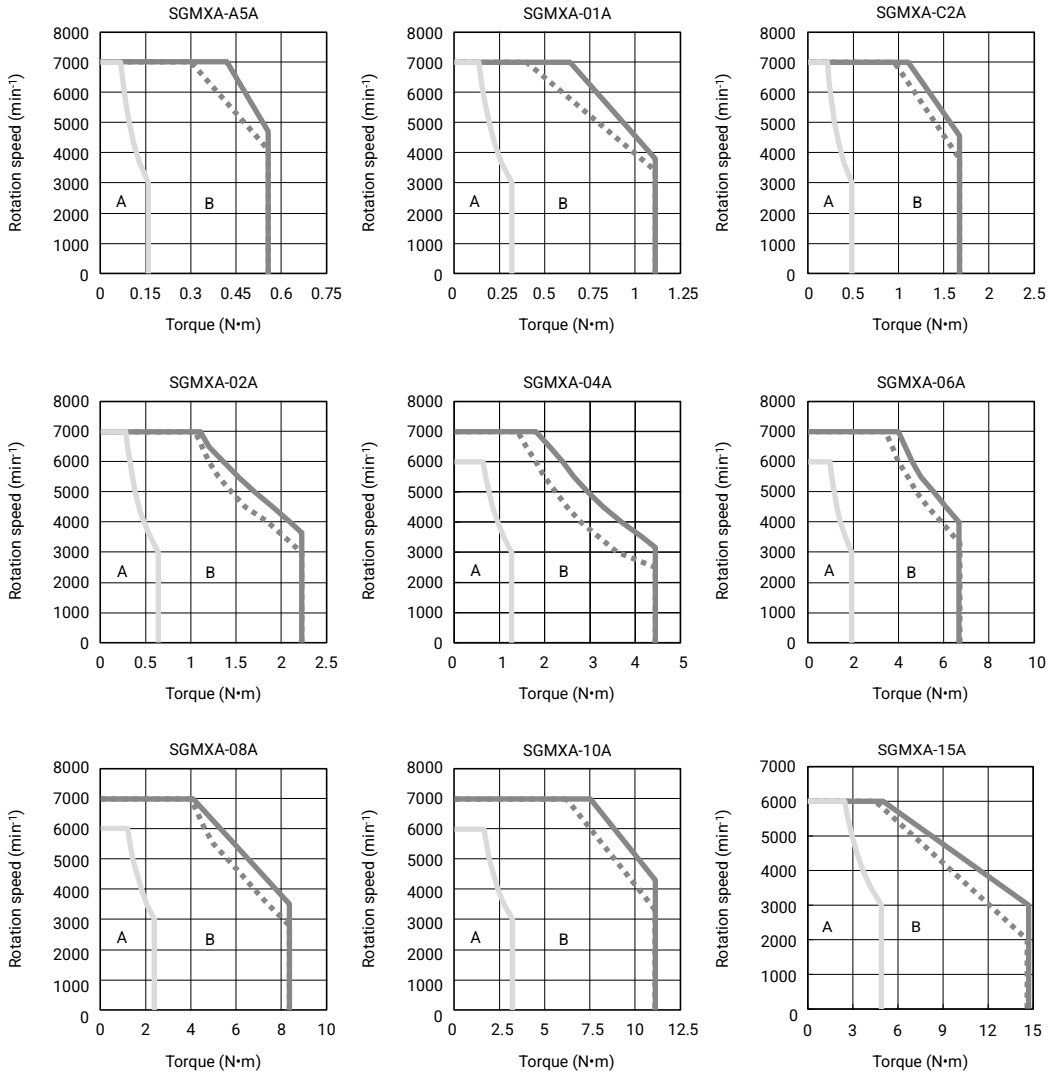
Servo motor SGMXA-□		A5A	01A	C2A	02A	04A	06A	08A	10A	15A	
Rated output	W	50	100	150	200	400	600	750	1000	1500	
Rated torque	Nm	0.159	0.318	0.477	0.637	1.27	1.91	2.39	3.18	4.90	
Instantaneous peak torque	Nm	0.557	1.11	1.67	2.23	4.46	6.69	8.36	11.1	14.7	
Rated current	A _{rms}	0.57	0.89	1.5	1.5	2.4	4.5	4.4	6.4	9.3	
Instantaneous max. current	A _{rms}	2.1	3.2	5.6	5.9	9.3	16.9	16.8	23.2	28	
Rated speed	min ⁻¹	3,000									
Continuous allowable rotation speed	min ⁻¹	7,000					6,000				
Max. speed	min ⁻¹	7,000									
Torque constant	Nm/A _{rms}	0.304	0.384	0.332	0.458	0.576	0.456	0.584	0.541	0.590	
Rotor moment of inertia (JM)	Without holding brakes	kg×m ² × 10 ⁻⁴	0.0220	0.0340	0.0461	0.139	0.216	0.315	0.773	0.969	2.00
	With holding brakes		0.0300	0.0420	0.0541	0.199	0.276	0.375	0.943	1.14	2.25
	Without holding brake and with batteryless absolute encoder		0.0257	0.0377	0.0498	0.143	0.220	0.319	0.777	0.973	-
	With holding brake and batteryless encoder		0.0337	0.0457	0.0578	0.203	0.280	0.379	0.947	1.14	-
Allowable load moment of inertia (JL)	Without external devices	At 6000 min ⁻¹	40×	40×	40×	30×	20×	20×	20×	20×	10×
		At 7000 min ⁻¹	40×	40×	40×	25×	15×	20×	15×	20×	-
	With external regenerative resistor and external dynamic brake resistor	At 6000 min ⁻¹	40×	40×	40×	30×	20×	20×	20×	30×	20×
		At 7000 min ⁻¹	40×	40×	40×	30×	20×	20×	20×	30×	-
Rated power rate	Without holding brakes	kW/s	11.5	29.7	49.4	29.1	74.7	116	73.7	104	120
	With holding brakes		8.42	24.1	42.1	20.4	58.5	97.3	60.4	88.8	107
Rated angular acceleration	Without holding brakes	rad/s ²	72200	93500	103500	45700	58800	60600	30800	32800	24500
	With holding brakes		53000	75700	88200	31900	46000	50900	25300	27900	21700
Derating rate for servo motor with oil seal	%	80	90			95			95	-	
Time rating	Continuous										
Insulation resistance	500 VDC, 10 MΩ min.										
Ambient temperature	0°C to 40°C (With derating, usage is possible between 40°C and 60°C.)										
Ambient humidity	20% to 80% relative humidity (with no condensation)										
Vibration class	V15										
Enclosure	Totally enclosed, self-cooled, IP67										
Vibration resistance	49 m/s ²										

Torque-rotation speed characteristics

200 V

SGMXA (3000 min⁻¹)

A : Continuous duty zone — (solid lines): Three-phase, 200 V
B : Intermittent duty zone ····· (dotted lines): Single-phase, 200 V



Ratings and specifications

400 V

SGMXA (3000 min⁻¹)

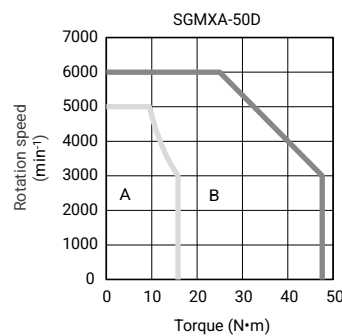
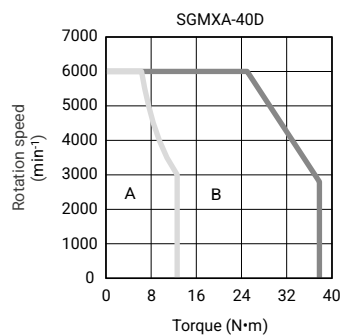
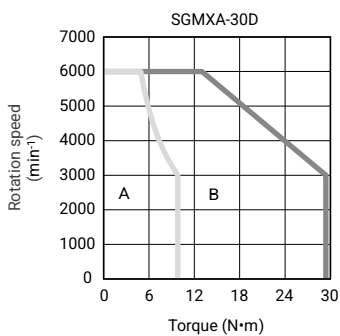
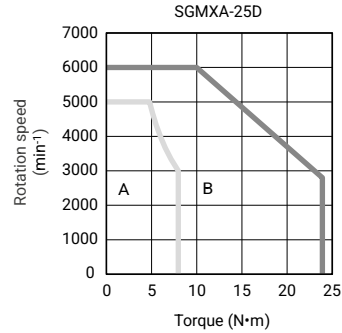
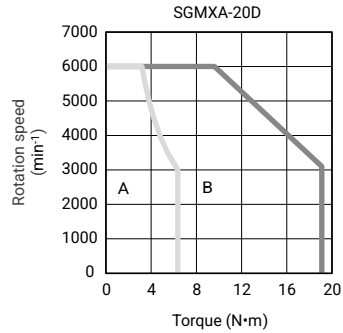
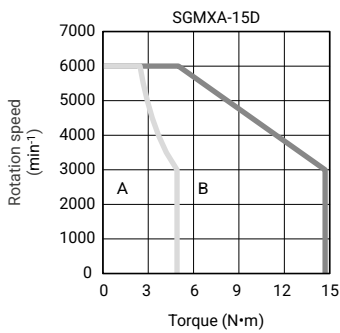
Servo motor SGMXA-□		15D	20D	25D	30D	40D	50D	
Rated output	W	1,500	2,000	2,500	3,000	4,000	5,000	
Rated torque	Nm	4.90	6.36	7.96	9.80	12.6	15.8	
Instantaneous peak torque	Nm	14.7	19.1	23.9	29.4	37.8	47.6	
Rated current	A _{rms}	4.5	5.9	7.4	8.9	12.5	13.8	
Instantaneous max. current	A _{rms}	14	20	25	28	39	42	
Rated speed	min ⁻¹	3,000						
Continuous allowable rotation speed	min ⁻¹	6,000	5,000	6,000	6,000	5,000		
Max. speed	min ⁻¹	6,000						
Torque constant	Nm/A _{rms}	1.23	1.18	1.15	1.16	1.06	1.21	
Rotor moment of inertia (JM)	Without holding brakes	kg×m ² × 10 ⁻⁴	2.00	2.47	3.19	7.00	9.60	12.3
	With holding brakes		2.25	2.72	3.44	9.20	11.8	14.5
Allowable load moment of inertia (JL)	Without external devices	10×			5×			
	With external regenerative resistor and external dynamic brake resistor	20×			15×			
Rated power rate	Without holding brakes	kW/s	120	164	199	137	165	203
	With holding brakes		107	149	184	104	135	172
Rated angular acceleration	Without holding brakes	rad/s ²	24500	25700	24900	14000	13100	12800
	With holding brakes		21700	23300	23100	10600	10600	10800
Time rating	Continuous							
Insulation resistance	500 VDC, 10 MΩ min.							
Ambient temperature	0°C to 40°C (With derating, usage is possible between 40°C and 60°C.)							
Ambient humidity	20% to 80% relative humidity (with no condensation)							
Vibration class	V15							
Enclosure	Totally enclosed, self-cooled, IP67							
Vibration resistance	49 m/s ²							

Torque-rotation speed characteristics

400 V

SGMXA (3000 min⁻¹)

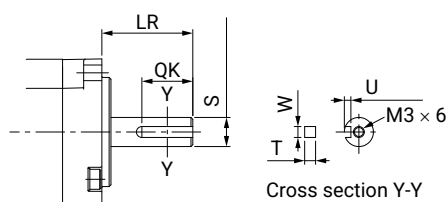
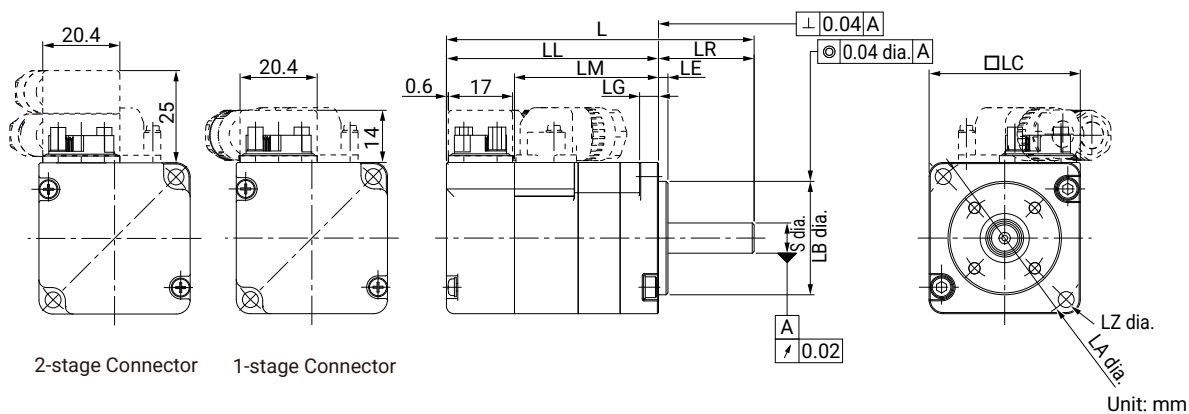
A : Continuous duty zone — (solid lines): Three-phase, 400 V
B : Intermittent duty zone



Dimensions

SGMXA (3000 min⁻¹)

Dimensions [mm]	Without brake		With brake		LR	Flange surface						Shaft end					Mass [kg]	
	L	LL	L	LL		LA	LB	LC	LE	LG	LZ	S	QK	W	T	U	Without brake	With brake
SGMXA-A5A□A21A1	80.5	55.5	121	96	25	46	30	40	2.5	5	4.3	8	14	3	3	1.8	0.3	0.6
SGMXA-01A□A21A1	92.5	67.5	133	108	25	46	30	40	2.5	5	4.3	8	14	3	3	1.8	0.4	0.7
SGMXA-C2A□A21A1	104.5	79.5	153	128	25	46	30	40	2.5	5	4.3	8	14	3	3	1.8	0.5	0.8
SGMXA-02A□A21A1	98.5	68.5	139	109	30	70	50	60	3	6	5.5	14	14	5	5	3	0.8	1.4
SGMXA-04A□A21A1	115	85	155.5	125.5	30	70	50	60	3	6	5.5	14	14	5	5	3	1.2	1.8
SGMXA-06A□A21A1	137	107	191	161	30	70	50	60	3	6	5.5	14	14	5	5	3	1.6	2.2
SGMXA-08A□A21A1	136	96	183	143	40	90	70	80	3	8	7	19	22	6	6	3.5	2.3	2.9
SGMXA-10A□A21A1	161	121	208	168	40	90	70	80	3	8	7	19	22	6	6	3.5	3.1	3.7
SGMXA-15A□A21A1	200	155	241	196	45	115	95	100	3	10	7	24	32	8	7	4	4.6	6.0

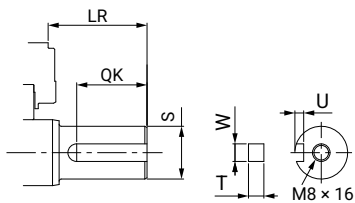
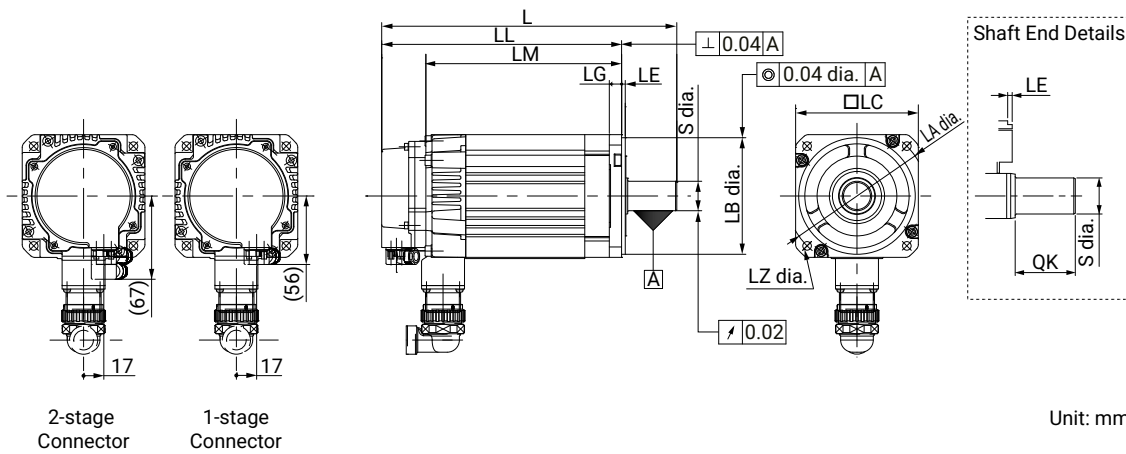


Shapes of the actual products may differ.
Number of holes may differ.

Dimensions

SGMXA (3000 min⁻¹)

Dimensions [mm]	Without brake		With brake		LR	Flange surface						Shaft end					Mass [kg]	
	L	LL	L	LL		LA	LB	LC	LE	LG	LZ	S	QK	W	T	U	Without brake	With brake
SGMXA-15D□A2FA1	200	155	241	196	45	115	95	100	3	10	7	24	32	8	7	4	4.6	6.0
SGMXA-20D□A2FA1	216	171	257	212	45	115	95	100	3	10	7	24	32	8	7	4	5.4	6.8
SGMXA-25D□A2FA1	239	194	290	245	45	115	95	100	3	10	7	24	32	8	7	4	6.8	8.7
SGMXA-30D□A2FA1	255	192	291	228	63	145	110	130	6	12	9	28	50	8	7	4	10.5	13
SGMXA-40D□A2FA1	294	231	330	267	63	145	110	130	6	12	9	28	50	8	7	4	13.5	16
SGMXA-50D□A2FA1	334	271	370	307	63	145	110	130	6	12	9	28	50	8	7	4	16.5	19



Shapes of the actual products may differ.
Number of holes may differ.

Ratings and specifications

200 V

SGMXG (1500 min⁻¹)

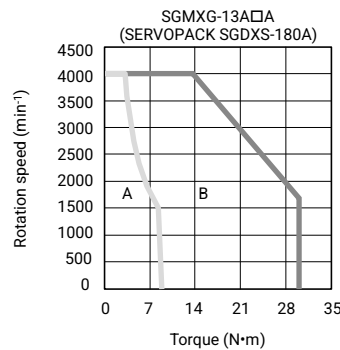
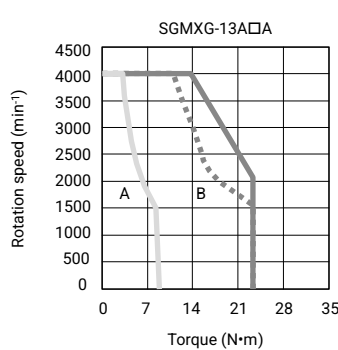
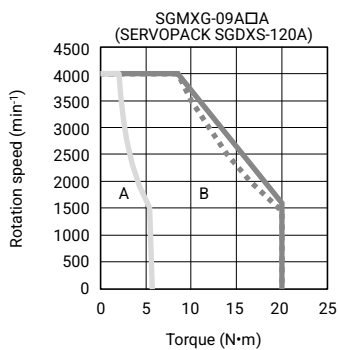
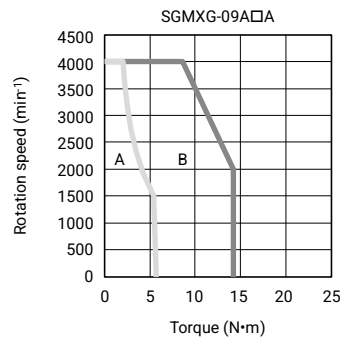
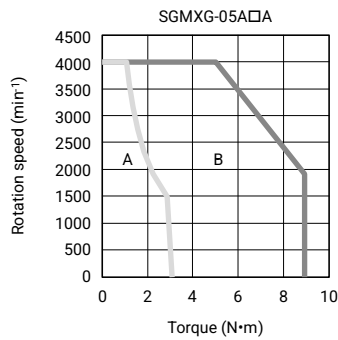
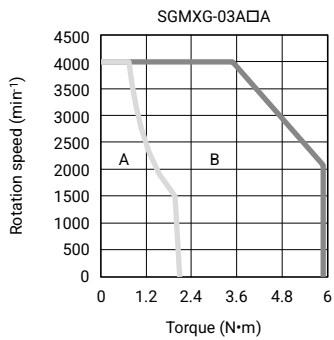
Servo motor SGMXG-□		03A□A	05A□A	09A□A	13A□A	
Rated output	W	300	450	850	1,300	
Rated torque	Nm	1.96	2.86	5.39	8.34	
Instantaneous peak torque	Nm	5.88	8.92	14.2	23.3	
Rated current	A _{rms}	2.8	3.8	6.9	10.7	
Instantaneous max. current	A _{rms}	8.0	11	17	28	
Rated speed	min ⁻¹	1,500				
Continuous allowable rotation speed	min ⁻¹	4,000				
Max. speed	min ⁻¹	4,000				
Torque constant	Nm/A _{rms}	0.776	0.854	0.859	0.891	
Rotor moment of inertia (JM)	Without holding brakes	kgxm ² × 10 ⁻⁴	2.48	3.33	13.9	19.9
	With holding brakes		2.73	3.58	16.0	22.0
Allowable load moment of inertia (JL)	Without external devices	At 3000 min ⁻¹	15×	15×	5×	5×
		At 4000 min ⁻¹	8.4×	8.4×	2×	2×
	With external regenerative resistor and external dynamic brake resistor	At 3000 min ⁻¹	15×	15×	10×	10×
		At 4000 min ⁻¹	8.4×	8.4×	8×	9×
Rated power rate	Without holding brakes	kW/s	15.5	24.6	20.9	35.0
	With holding brakes		14.1	22.9	18.2	31.6
Rated angular acceleration	Without holding brakes	rad/s ²	7900	8590	3880	4190
	With holding brakes		7180	7990	3370	3790
Time rating		Continuous				
Insulation resistance		500 VDC, 10 MΩ min.				
Ambient temperature		0°C to 40°C (With derating, usage is possible between 40°C and 60°C.)				
Ambient humidity		20% to 80% relative humidity (with no condensation)				
Vibration class		V15				
Enclosure		Totally enclosed, self-cooled, IP67				
Vibration resistance		49 m/s ²				

Torque-rotation speed characteristics

200 V

SGMXG (1500 min⁻¹)

A : Continuous duty zone — (solid lines): Three-phase, 200 V
B : Intermittent duty zone ····· (dotted lines): Single-phase, 200 V



Ratings and specifications

400 V

SGMXG (1500 min⁻¹)

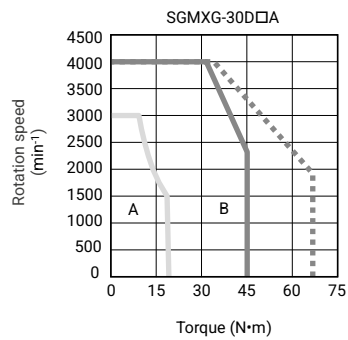
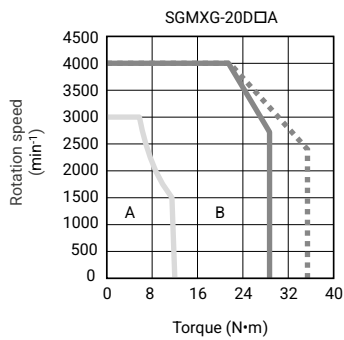
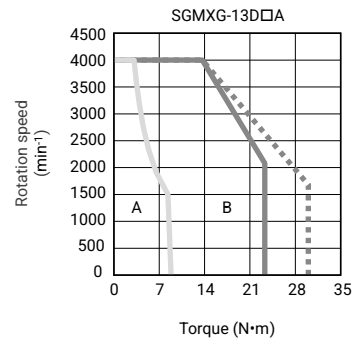
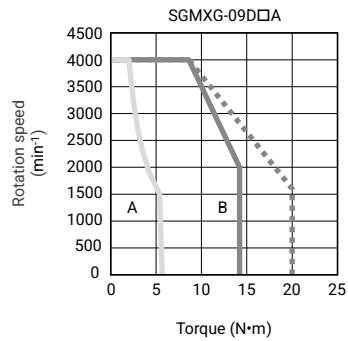
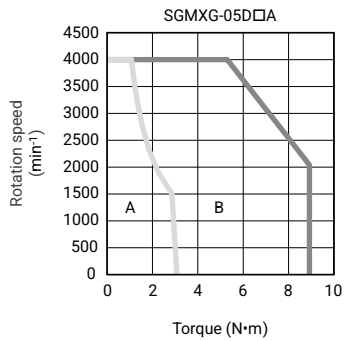
Servo motor SGMXG-□		05D□A	09D□A	13D□A	20D□A	30D□A	
Rated output	W	450	850	1,300	1,800	2,900	
Rated torque	Nm	2.86	5.39	8.34	11.5	18.6	
Instantaneous peak torque	Nm	8.92	14.2	23.3	28.7	45.1	
Rated current	A _{rms}	1.9	3.5	5.4	8.4	11.9	
Instantaneous max. current	A _{rms}	5.5	8.5	14	21	28	
Rated speed	min ⁻¹	1,500					
Continuous allowable rotation speed	min ⁻¹	4,000			3,000		
Max. speed	min ⁻¹	4,000					
Torque constant	Nm/A _{rms}	1.71	1.72	1.78	1.50	1.69	
Rotor moment of inertia (JM)	Without holding brakes	kgxm ² × 10 ⁻⁴	3.33	13.9	19.9	26.0	46.0
	With holding brakes		3.58	16.0	22.0	28.1	53.9
Allowable load moment of inertia (JL)	Without external devices	At 3000 min ⁻¹	15x	5x			
		At 4000 min ⁻¹	8.4x	2x	5x	2.2x	
	With external regenerative resistor and external dynamic brake resistor	At 3000 min ⁻¹	15x	10x			
		At 4000 min ⁻¹	8.4x	8x	9x	7x	2.2x
Rated power rate	Without holding brakes	kW/s	24.6	20.9	35.0	50.9	75.2
	With holding brakes		22.9	18.2	31.6	47.1	64.2
Rated angular acceleration	Without holding brakes	rad/s ²	8590	3880	4190	4420	4040
	With holding brakes		7990	3370	3790	4090	3450
Time rating		Continuous					
Insulation resistance		500 VDC, 10 MΩ min.					
Ambient temperature		0°C to 40°C (With derating, usage is possible between 40°C and 60°C.)					
Ambient humidity		20% to 80% relative humidity (with no condensation)					
Vibration class		V15					
Enclosure		Totally enclosed, self-cooled, IP67					
Vibration resistance		49 m/s ²					

Torque-rotation speed characteristics

400 V

SGMXG (1500 min⁻¹)

A : Continuous duty zone — (solid lines): Three-phase, 400 V
B : Intermittent duty zone ····· (dotted lines): Three-phase, 400 V (with changed SERVOPACK combination)



Ratings and specifications

400 V

SGMXG (1500 min⁻¹)

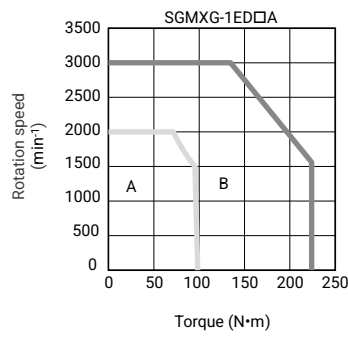
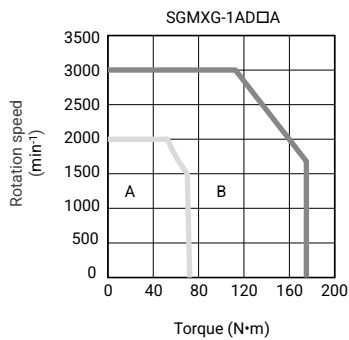
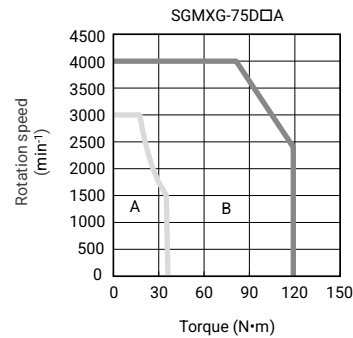
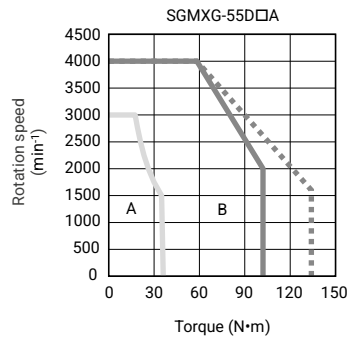
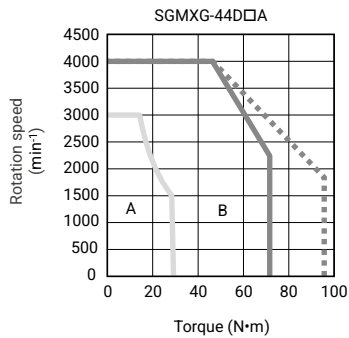
Servo motor SGMXG-□		44D□A	55D□A	75D□A	1AD□A	1ED□A	
Rated output	W	4,400	5,500	7,500	11,000	15,000	
Rated torque	Nm	28.4	35.0	48.0	70.0	95.4	
Instantaneous peak torque	Nm	71.6	102	119	175	224	
Rated current	A _{rms}	16.0	18.6	25.7	28.1	37.0	
Instantaneous max. current	A _{rms}	41	55	63	70	85	
Rated speed	min ⁻¹	1,500					
Continuous allowable rotation speed	min ⁻¹	3,000			2,000		
Max. speed	min ⁻¹	4,000			3,000		
Torque constant	Nm/A _{rms}	1.92	2.05	1.97	2.76	2.86	
Rotor moment of inertia (JM)	Without holding brakes	kgxm ² × 10 ⁻⁴	67.5	89.0	125	242	303
	With holding brakes		75.4	96.9	133	261	341
Allowable load moment of inertia (JL)	Without external devices	At 2000 min ⁻¹	-			5x	
		At 3000 min ⁻¹	5x			2.2x	1.5x
		At 4000 min ⁻¹	2.4x	3.5x	2.2x	-	-
	With external regenerative resistor and external dynamic brake resistor	At 2000 min ⁻¹	-			10x	
		At 3000 min ⁻¹	10x			4x	2x
		At 4000 min ⁻¹	5x		4x	-	
Rated power rate	Without holding brakes	kW/s	119	138	184	202	300
	With holding brakes		107	126	173	188	267
Rated angular acceleration	Without holding brakes	rad/s ²	4210	3930	3840	2890	3150
	With holding brakes		3770	3610	3610	2680	2800
Time rating	Continuous						
Insulation resistance	500 VDC, 10 MΩ min.						
Ambient temperature	0°C to 40°C (With derating, usage is possible between 40°C and 60°C.)						
Ambient humidity	20% to 80% relative humidity (with no condensation)						
Vibration class	V15						
Enclosure	Totally enclosed, self-cooled, IP67						
Vibration resistance	49 m/s ²	24.5 m/s ²					

Torque-rotation speed characteristics

400 V

SGMXG (1500 min⁻¹)

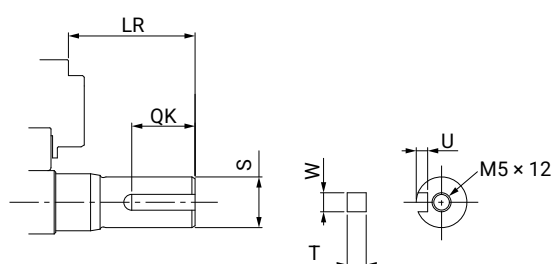
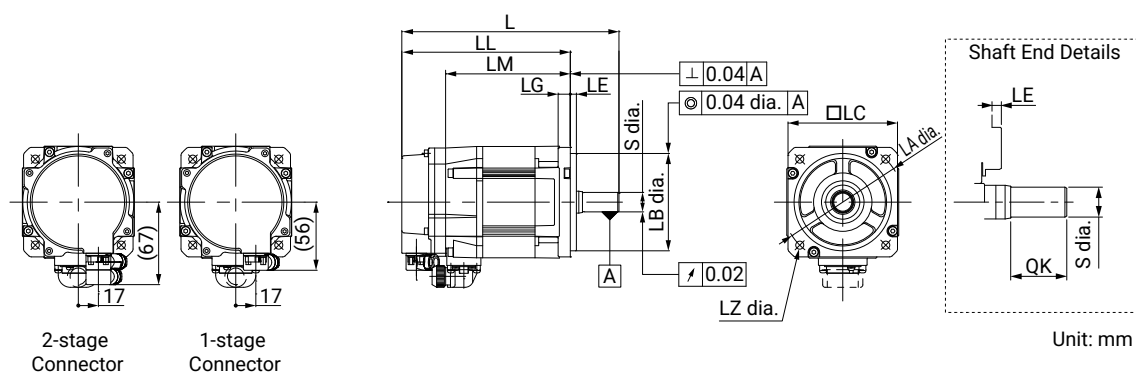
A : Continuous duty zone — (solid lines): Three-phase, 400 V
B : Intermittent duty zone ····· (dotted lines): Three-phase, 400 V (with changed SERVOPACK combination)



Dimensions

SGMXG (1500 min⁻¹)

Dimensions [mm]	Without brake		With brake		LR	Flange surface						Shaft end					Mass [kg]	
	L	LL	L	LL		LA	LB	LC	LE	LG	LZ	S	QK	W	T	U	Without brake	With brake
SGMXG-03A□A21A1	164	124	197	157	40	100	80	90	5	10	6.6	16	20	5	5	3	2.6	3.6
SGMXG-05A□A21A1	177	137	210	170	40	100	80	90	5	10	6.6	16	20	5	5	3	3.2	4.2
SGMXG-09A□A21A1	193	135	229	171	58	145	110	130	6	12	9	24	25	8	7	4	5.5	7.5
SGMXG-13A□A21A1	209	151	245	187	58	145	110	130	6	12	9	24	25	8	7	4	7.1	9.0

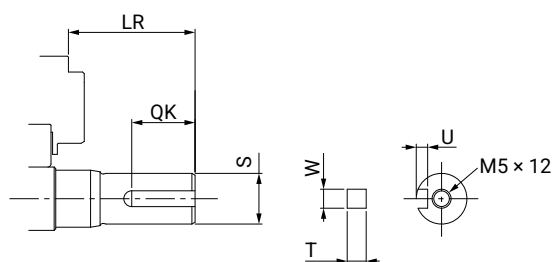
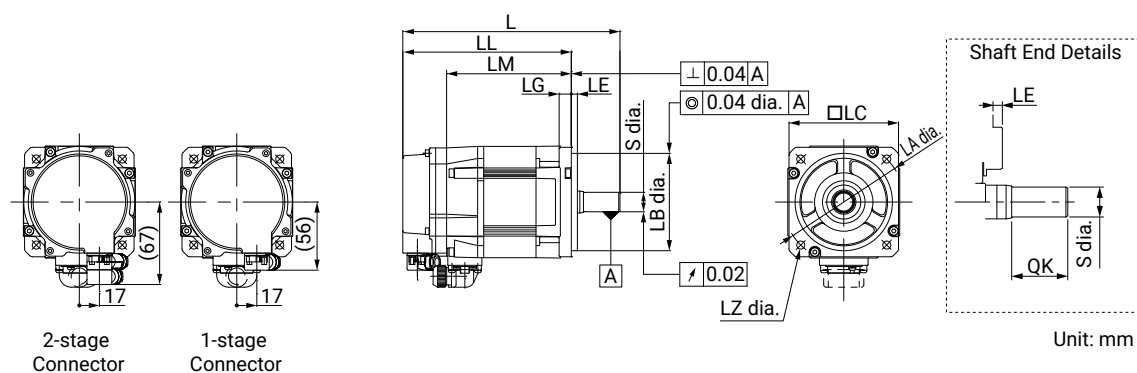


Shapes of the actual products may differ.
Number of holes may differ.

Dimensions

SGMXG (1500 min⁻¹)

Dimensions [mm]	Without brake		With brake		LR	Flange surface						Shaft end					Mass [kg]	
	L	LL	L	LL		LA	LB	LC	LE	LG	LZ	S	QK	W	T	U	Without brake	With brake
SGMXG-05D□A2FA1	177	137	210	170	40	100	80	90	5	10	6.6	16	20	5	5	3	3.2	4.2
SGMXG-09D□A2FA1	193	135	229	171	58	145	110	130	6	12	9	24	25	8	7	4	5.5	7.5
SGMXG-13D□A2FA1	209	151	245	187	58	145	110	130	6	12	9	24	25	8	7	4	7.1	9.0
SGMXG-20D□A2FA1	227	169	263	205	58	145	110	130	6	12	9	24	25	8	7	4	8.6	11.0
SGMXG-30D□A8FA1	237	158	287	208	79	200	114.3	180	3.2	18	13.5	35	60	10	8	5	13.5	19.5
SGMXG-44D□A8FA1	261	182	311	232	79	200	114.3	180	3.2	18	13.5	35	60	10	8	5	17.5	23.5
SGMXG-55D□A8FA1	332	219	376	263	113	200	114.3	180	3.2	18	13.5	42	90	12	8	5	21.5	27.5
SGMXG-75D□A8FA1	378	265	422	309	113	200	114.3	180	3.2	18	13.5	42	90	12	8	5	29.5	35.0
SGMXG-1AD□A8FA1	445	329	496	380	116	235	200	220	4	20	13.5	42	90	12	8	5	57	65
SGMXG-1ED□A8FA1	507	391	596	480	116	235	200	220	4	20	13.5	55	90	16	10	6	67	79



Shapes of the actual products may differ.
Number of holes may differ.

Ratings and specifications

200 V

SGMXJ (3000 min⁻¹)

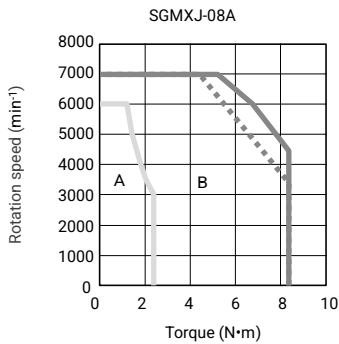
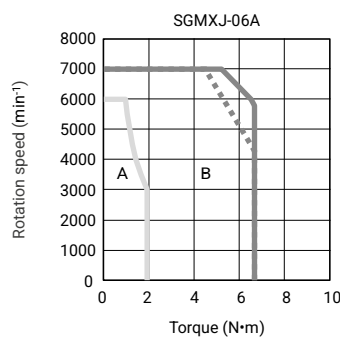
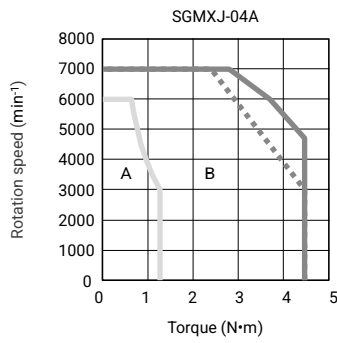
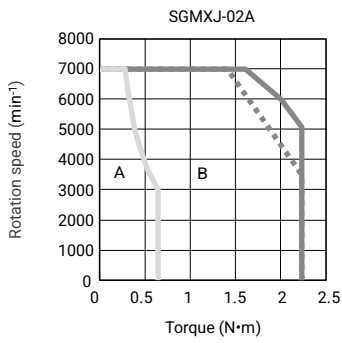
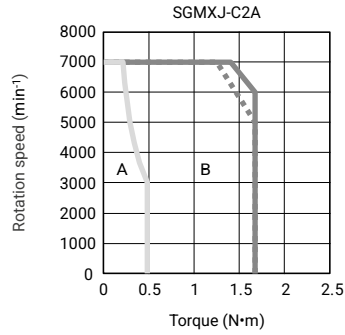
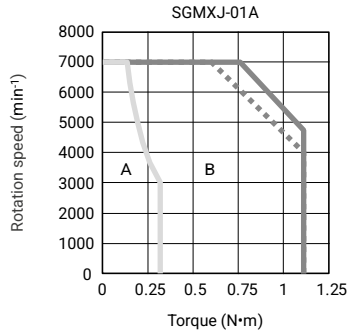
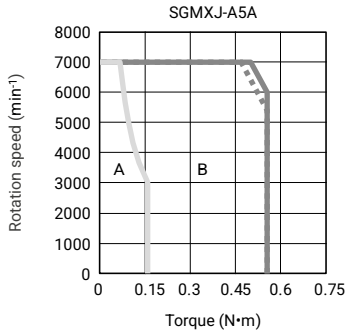
Servo motor SGMXJ-□		A5A	01A	C2A	02A	04A	06A	08A	
Rated output	W	50	100	150	200	400	600	750	
Rated torque	Nm	0.159	0.318	0.477	0.637	1.27	1.91	2.39	
Instantaneous peak torque	Nm	0.557	1.11	1.67	2.23	4.46	6.69	8.36	
Rated current	A _{rms}	0.55	0.85	1.6	1.6	2.5	4.2	4.4	
Instantaneous max. current	A _{rms}	2.0	3.1	5.7	5.8	9.3	15.3	16.9	
Rated speed	min ⁻¹	3,000							
Continuous allowable rotation speed	min ⁻¹	7,000				6,000			
Max. speed	min ⁻¹	7,000							
Torque constant	Nm/A _{rms}	0.316	0.413	0.321	0.444	0.544	0.493	0.584	
Rotor moment of inertia (JM)	Without holding brakes	kg×m ² × 10 ⁻⁴	0.0421	0.0669	0.0946	0.263	0.486	0.800	1.59
	With holding brakes		0.0501	0.0749	0.103	0.323	0.546	0.860	1.76
	Without holding brake and with batteryless absolute encoder		0.0458	0.0706	0.0983	0.267	0.490	0.804	1.59
	With holding brake and batteryless encoder		0.0538	0.0786	0.107	0.327	0.550	0.864	1.76
Allowable load moment of inertia (JL)	Without external devices	At 6000 min ⁻¹	35×	35×	35×	15×	10×	20×	12×
		At 7000 min ⁻¹				10×	5×	15×	8×
	With external regenerative resistor and external dynamic brake resistor	At 6000 min ⁻¹	35×	35×	35×	25×	25×	20×	15×
		At 7000 min ⁻¹							
Rated power rate	Without holding brakes	kW/s	6.00	15.1	24.0	15.4	33.1	45.6	35.9
	With holding brakes		5.04	13.5	22.1	12.5	29.5	42.4	32.4
Rated angular acceleration	Without holding brakes	rad/s ²	37700	47500	50400	24200	26100	23800	15000
	With holding brakes		31700	42400	46400	19700	23200	22200	13500
Derating rate for servo motor with oil seal	%	80	90			95			
Time rating		Continuous							
Insulation resistance		500 VDC, 10 MΩ min.							
Ambient temperature		0°C to 40°C (With derating, usage is possible between 40°C and 60°C.)							
Ambient humidity		20% to 80% relative humidity (with no condensation)							
Vibration class		V15							
Enclosure		Totally enclosed, self-cooled, IP67							
Vibration resistance		49 m/s ²							

Torque-rotation speed characteristics

200 V

SGMJ (3000 min⁻¹)

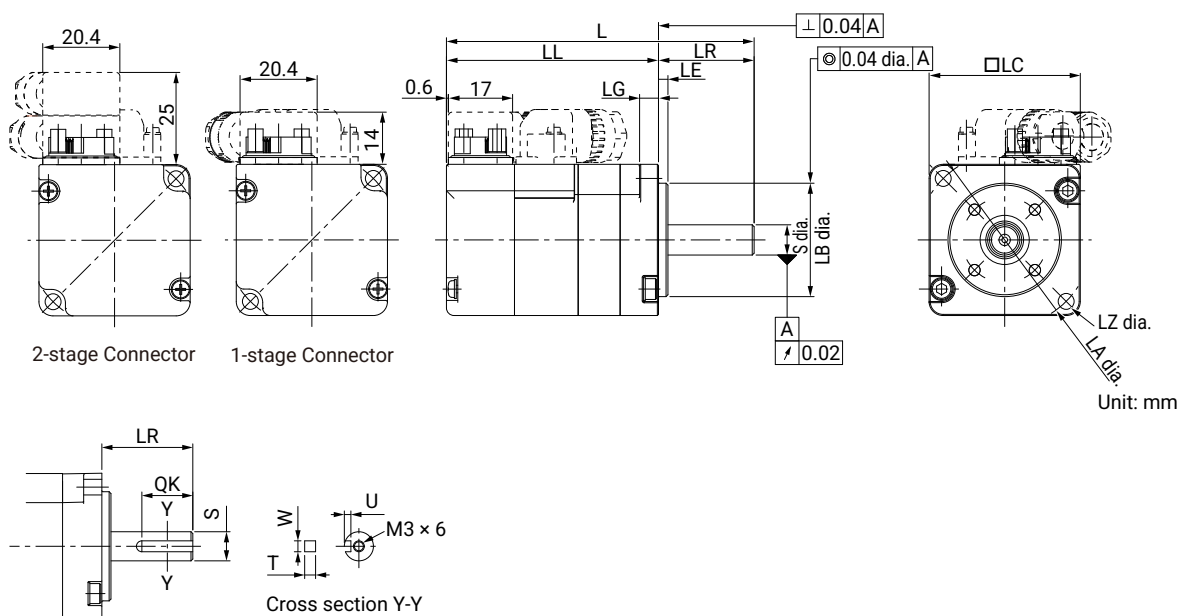
A : Continuous duty zone (solid lines): Three-phase, 200 V
B : Intermittent duty zone (dotted lines): Single-phase, 200 V



Dimensions

SGMJ (3000 min⁻¹)

Dimensions [mm]	Without brake		With brake		LR	Flange surface						Shaft end					Mass [kg]	
	L	LL	L	LL		LA	LB	LC	LE	LG	LZ	S	QK	W	T	U	Without brake	With brake
SGMJ-A5A□A21A1	80.5	55.5	121	96	25	46	30	40	2.5	5	4.3	8	14	3	3	1.8	0.3	0.6
SGMJ-01A□A21A1	92.5	67.5	133	108	25	46	30	40	2.5	5	4.3	8	14	3	3	1.8	0.4	0.7
SGMJ-C2A□A21A1	104.5	79.5	153	128	25	46	30	40	2.5	5	4.3	8	14	3	3	1.8	0.5	0.8
SGMJ-02A□A21A1	98.5	68.5	139	109	30	70	50	60	3	6	5.5	14	14	5	5	3	0.8	1.4
SGMJ-04A□A21A1	115	85	155.5	125.5	30	70	50	60	3	6	5.5	14	14	5	5	3	1.1	1.7
SGMJ-06A□A21A1	137	107	191	161	30	70	50	60	3	6	5.5	14	14	5	5	3	1.6	2.2
SGMJ-08A□A21A1	136	96	183	143	40	90	70	80	3	8	7	19	22	6	6	3.5	2.2	2.8



Shapes of the actual products may differ.
Number of holes may differ.



Servopacks

Model
designation

SGDXS - R70 A 00 A 0000

① ② ③ ④ ⑤ ⑥

1	Servopack type
SGDXS	Servopack, single-axis
SGDXW	Servopack, dual-axis
SGDXT	Servopack, triple-axis

2	Max. applicable motor capacity per axis		
Type	SGDXS	SGDXW	SGDXT
R70	50 W	–	–
R90	100 W	–	–
1R6	200 W	200 W	200 W
2R8	400 W	400 W	400 W
5R5	750 W	750 W	–
120	1,500 W	–	–

3	Power supply voltage
A	200 VAC

4	Interface		
Type	SGDXS	SGDXW	SGDXT
00	Analog voltage/ pulse train ref.	–	
40 *	Mechatrolink-4/III communications reference		
A0	EtherCAT communications reference		

5	Design revision order
A	Standard

6	Hardware options		
Type	SGDXS	SGDXW	SGDXT
–	None		
0000	None		
0008	Single-phase, 200 VAC power supply input * ²	–	
1000	–	HWBB function * ¹	

* On request.

*¹ Enables STO function for multi-axis servopacks.

*² Only SGDXS-120A models.

Servopacks

Model
designation

SGDXS - 1R9 D 00 A 0000

① ② ③ ④ ⑤ ⑥

1	Servopack type
SGDXS	Servopack, single-axis

2	Max. applicable motor capacity per axis
1R9	500 W
3R5	1,000 W
5R4	1,500 W
8R4	2,000 W
120	3,000 W
170	5,000 W
210	6,000 W
260	7,500 W
280	11,000 W
370	15,000 W

3	Power supply voltage
D	400 VAC

4	Interface
00	Analog voltage/pulse train ref.
40 *	Mechatrolink-4/III communications reference
A0	EtherCAT communications reference

5	Design revision order
A	Standard

6	Hardware options
-	None
0000	
0020 *	External dynamic brake resistor

* On request.

Servo drives and accessories

Servo drive			EMC filter		CN1 I/O connection	
Model	Axes	Communication	Model	Top-mount *1	Model	Remarks
SGDXS-R70A00A	1	Analog/Pulse	FESS-B005A	x	JZSP-CSI9-1-E	Soldered connector kit, 50 pin
					JZSP-CSI01-□-E *2	Connector cable with flying leads
					CBK-U-MP2B-□□EU *3	CN1 connection; terminal block with cable & screwless clamp connectors
SGDXS-R90A00A	1	Analog/Pulse	FESS-B005A	x	JZSP-CSI9-1-E	Soldered connector kit, 50 pin
					JZSP-CSI01-□-E *2	Connector cable with flying leads
					CBK-U-MP2B-□□EU *3	CN1 connection; terminal block with cable & screwless clamp connectors
SGDXS-1R6A00A	1	Analog/Pulse	FESS-B005A	x	JZSP-CSI9-1-E	Soldered connector kit, 50 pin
					JZSP-CSI01-□-E *2	Connector cable with flying leads
					CBK-U-MP2B-□□EU *3	CN1 connection; terminal block with cable & screwless clamp connectors
SGDXS-2R8A00A	1	Analog/Pulse	FESS-B005A	x	JZSP-CSI9-1-E	Soldered connector kit, 50 pin
					JZSP-CSI01-□-E *2	Connector cable with flying leads
					CBK-U-MP2B-□□EU *3	CN1 connection; terminal block with cable & screwless clamp connectors
SGDXS-5R5A00A	1	Analog/Pulse	FESS-B009A	x	JZSP-CSI9-1-E	Soldered connector kit, 50 pin
					JZSP-CSI01-□-E *2	Connector cable with flying leads
					CBK-U-MP2B-□□EU *3	CN1 connection; terminal block with cable & screwless clamp connectors
SGDXS-120A00A0008	1	Analog/Pulse	FESS-B016A	-	JZSP-CSI9-1-E	Soldered connector kit, 50 pin
					JZSP-CSI01-□-E *2	Connector cable with flying leads
					CBK-U-MP2B-□□EU *3	CN1 connection; terminal block with cable & screwless clamp connectors

*1 The servo drive can be mounted on top of the EMC filter.

*2 □ defines the cable length with 1, 2, or 3 m.

*3 □□ defines the cable length with A5 = 0.5 m, or 01 = 1 m.

*4 □□ defines the cable length with 01 = 1 m, or 03 = 3 m.



SGDXS
Single axis

CN8 Safety function cables		Shield clamp	CN7 Computer cable		CN6 Communication cable	
Model	Remarks	Model	Model	Remarks	Model	Remarks
2013595-1	Connector kit	KLBUE 4-13.5 SET	JZSP-CVS06-02-E	USB-A / Mini-USB cable, length 2.5 m	-	-
JZSP-CVH03-□□-E-G7 *4	Connector cable with flying leads					
-	-					
2013595-1	Connector kit	KLBUE 4-13.5 SET	JZSP-CVS06-02-E	USB-A / Mini-USB cable, length 2.5 m	-	-
JZSP-CVH03-□□-E-G7 *4	Connector cable with flying leads					
-	-					
2013595-1	Connector kit	KLBUE 4-13.5 SET	JZSP-CVS06-02-E	USB-A / Mini-USB cable, length 2.5 m	-	-
JZSP-CVH03-□□-E-G7 *4	Connector cable with flying leads					
-	-					
2013595-1	Connector kit	KLBUE 4-13.5 SET	JZSP-CVS06-02-E	USB-A / Mini-USB cable, length 2.5 m	-	-
JZSP-CVH03-□□-E-G7 *4	Connector cable with flying leads					
-	-					
2013595-1	Connector kit	KLBUE 4-13.5 SET	JZSP-CVS06-02-E	USB-A / Mini-USB cable, length 2.5 m	-	-
JZSP-CVH03-□□-E-G7 *4	Connector cable with flying leads					
-	-					
2013595-1	Connector kit	KLBUE 4-13.5 SET	JZSP-CVS06-02-E	USB-A / Mini-USB cable, length 2.5 m	-	-
JZSP-CVH03-□□-E-G7 *4	Connector cable with flying leads					
-	-					
2013595-1	Connector kit	KLBUE 4-13.5 SET	JZSP-CVS06-02-E	USB-A / Mini-USB cable, length 2.5 m	-	-
JZSP-CVH03-□□-E-G7 *4	Connector cable with flying leads					
-	-					

Servo drives and accessories

Servo drive			EMC filter		CN1 I/O connection	
Model	Axes	Communication	Model	Top-mount *1	Model	Remarks
SGDXS-R70AA0A	1	EtherCAT	FESS-B005A	x	JZSP-CSI9-2-E	Soldered connector kit, 26 pin
					JZSP-CSI02-□-E *2	Connector cable with flying leads
					SBK-U-VBA-□□EU *3	CN1 connection; terminal block with cable & screwless clamp connectors
SGDXS-R90AA0A	1	EtherCAT	FESS-B005A	x	JZSP-CSI9-2-E	Soldered connector kit, 26 pin
					JZSP-CSI02-□-E *2	Connector cable with flying leads
					SBK-U-VBA-□□EU *3	CN1 connection; terminal block with cable & screwless clamp connectors
SGDXS-1R6AA0A	1	EtherCAT	FESS-B005A	x	JZSP-CSI9-2-E	Soldered connector kit, 26 pin
					JZSP-CSI02-□-E *2	Connector cable with flying leads
					SBK-U-VBA-□□EU *3	CN1 connection; terminal block with cable & screwless clamp connectors
SGDXS-2R8AA0A	1	EtherCAT	FESS-B005A	x	JZSP-CSI9-2-E	Soldered connector kit, 26 pin
					JZSP-CSI02-□-E *2	Connector cable with flying leads
					SBK-U-VBA-□□EU *3	CN1 connection; terminal block with cable & screwless clamp connectors
SGDXS-5R5AA0A	1	EtherCAT	FESS-B009A	x	JZSP-CSI9-2-E	Soldered connector kit, 26 pin
					JZSP-CSI02-□-E *2	Connector cable with flying leads
					SBK-U-VBA-□□EU *3	CN1 connection; terminal block with cable & screwless clamp connectors
SGDXS-120AA0A0008	1	EtherCAT	FESS-B016A	-	JZSP-CSI9-2-E	Soldered connector kit, 26 pin
					JZSP-CSI02-□-E *2	Connector cable with flying leads
					SBK-U-VBA-□□EU *3	CN1 connection; terminal block with cable & screwless clamp connectors

*1 The servo drive can be mounted on top of the EMC filter.

*2 □ defines the cable length with 1, 2, or 3 m.

*3 □□ defines the cable length with 01 = 1 m.

*4 □□ defines the cable length with 01 = 1 m, or 03 = 3 m.

*5 □□ defines the cable length with P2 = 0.2 m, P5 = 0.5 m, 01 = 1 m, 03 = 3 m, 05 = 5 m, or 10 = 10 m.



CN8 Safety function cables		Shield clamp	CN7 Computer cable		CN6 Communication cable	
Model	Remarks	Model	Model	Remarks	Model	Remarks
2013595-1	Connector kit	KLBUE 4-13.5 SET	JZSP-CVS06-02-E	USB-A / Mini-USB cable, length 2.5 m	JZSP-CM3RRM0-□□-E *5	Communication Cable with RJ45 Connector on both ends
JZSP-CVH03-□□-E-G7 *4	Connector cable with flying leads					
-	-					
2013595-1	Connector kit	KLBUE 4-13.5 SET	JZSP-CVS06-02-E	USB-A / Mini-USB cable, length 2.5 m	JZSP-CM3RRM0-□□-E *5	Communication Cable with RJ45 Connector on both ends
JZSP-CVH03-□□-E-G7 *4	Connector cable with flying leads					
-	-					
2013595-1	Connector kit	KLBUE 4-13.5 SET	JZSP-CVS06-02-E	USB-A / Mini-USB cable, length 2.5 m	JZSP-CM3RRM0-□□-E *5	Communication Cable with RJ45 Connector on both ends
JZSP-CVH03-□□-E-G7 *4	Connector cable with flying leads					
-	-					
2013595-1	Connector kit	KLBUE 4-13.5 SET	JZSP-CVS06-02-E	USB-A / Mini-USB cable, length 2.5 m	JZSP-CM3RRM0-□□-E *5	Communication Cable with RJ45 Connector on both ends
JZSP-CVH03-□□-E-G7 *4	Connector cable with flying leads					
-	-					
2013595-1	Connector kit	KLBUE 4-13.5 SET	JZSP-CVS06-02-E	USB-A / Mini-USB cable, length 2.5 m	JZSP-CM3RRM0-□□-E *5	Communication Cable with RJ45 Connector on both ends
JZSP-CVH03-□□-E-G7 *4	Connector cable with flying leads					
-	-					
2013595-1	Connector kit	KLBUE 4-13.5 SET	JZSP-CVS06-02-E	USB-A / Mini-USB cable, length 2.5 m	JZSP-CM3RRM0-□□-E *5	Communication Cable with RJ45 Connector on both ends
JZSP-CVH03-□□-E-G7 *4	Connector cable with flying leads					
-	-					

Servo drives and accessories

Servo drive			EMC filter		CN1 I/O connection	
Model	Axes	Communication	Model	Top-mount *1	Model	Remarks
SGDXW-1R6AA0A1000	2	EtherCAT	FESW-B005A	x	DP9420007-E	Soldered connector kit
					JZSP-CSI03-□-E *2	Connector cable with flying leads
SGDXW-2R8AA0A1000	2	EtherCAT	FESW-B011A	x	DP9420007-E	Soldered connector kit
					JZSP-CSI03-□-E *2	Connector cable with flying leads
SGDXW-5R5AA0A1000	2	EtherCAT	FESW-B012A	x	DP9420007-E	Soldered connector kit
					JZSP-CSI03-□-E *2	Connector cable with flying leads
SGDXT-1R6AA0A1000	3	EtherCAT	under development		JZSP-CSI9-1-E	Soldered connector kit
					JZSP-CSI01-□-E *2	Connector cable with flying leads
					CBK-U-MP2B-□□EU *3	CN1 connection; terminal block with cable & screwless clamp connectors
SGDXT-2R8AA0A1000	3	EtherCAT	under development		JZSP-CSI9-1-E	Soldered connector kit
					JZSP-CSI01-□-E *2	Connector cable with flying leads
					CBK-U-MP2B-□□EU *3	CN1 connection; terminal block with cable & screwless clamp connectors

*1 The servo drive can be mounted on top of the EMC filter.

*2 □ defines the cable length with 1, 2, or 3 m.

*3 □□ defines the cable length with 01 = 1 m.

*4 □□ defines the cable length with 01 = 1 m, or 03 = 3 m.

*5 □□ defines the cable length with P2 = 0.2 m, P5 = 0.5 m, 01 = 1 m, 03 = 3 m, 05 = 5 m, or 10 = 10 m.



EtherCAT®

SGDXW & SGDXT Double & Triple axis

CN8 Safety function cables		Shield clamp	CN7 Computer cable		CN6 Communication cable	
Model	Remarks	Model	Model	Remarks	Model	Remarks
2013595-1	Connector kit	KLBUE 4-13.5 SET	JZSP-CVS06-02-E	USB-A / Mini-USB cable, length 2.5 m	JZSP-CM3RRM0-□□-E *5	Communication Cable with RJ45 Connector on both ends
JZSP-CVH03-□□-E-G7 *4	Connector cable with flying leads					
2013595-1	Connector kit	KLBUE 4-13.5 SET	JZSP-CVS06-02-E	USB-A / Mini-USB cable, length 2.5 m	JZSP-CM3RRM0-□□-E *5	Communication Cable with RJ45 Connector on both ends
JZSP-CVH03-□□-E-G7 *4	Connector cable with flying leads					
2013595-1	Connector kit	KLBUE 4-13.5 SET	JZSP-CVS06-02-E	USB-A / Mini-USB cable, length 2.5 m	JZSP-CM3RRM0-□□-E *5	Communication Cable with RJ45 Connector on both ends
JZSP-CVH03-□□-E-G7 *4	Connector cable with flying leads					
2013595-1	Connector kit	KLBUE 4-13.5 SET	JZSP-CVS06-02-E	USB-A / Mini-USB cable, length 2.5 m	JZSP-CM3RRM0-□□-E *5	Communication Cable with RJ45 Connector on both ends
JZSP-CVH03-□□-E-G7 *4	Connector cable with flying leads					
-	-					
2013595-1	Connector kit	KLBUE 4-13.5 SET	JZSP-CVS06-02-E	USB-A / Mini-USB cable, length 2.5 m	JZSP-CM3RRM0-□□-E *5	Communication Cable with RJ45 Connector on both ends
JZSP-CVH03-□□-E-G7 *4	Connector cable with flying leads					
-	-					

Servo drives and accessories

Servo drive			EMC filter		CN1 I/O connection	
Model	Axes	Communication	Model	Top-mount *1	Model	Remarks
SGDXS-1R9D00A	1	Analog/Pulse	under development		JZSP-CSI9-1-E	Soldered connector kit
					JZSP-CSI01-□-E *2	Connector cable with flying leads
					CBK-U-MP2B-□□EU *3	CN1 connection; terminal block with cable & screwless clamp connectors
SGDXS-3R5D00A	1	Analog/Pulse	under development		JZSP-CSI9-1-E	Soldered connector kit
					JZSP-CSI01-□-E *2	Connector cable with flying leads
					CBK-U-MP2B-□□EU *3	CN1 connection; terminal block with cable & screwless clamp connectors
SGDXS-5R4D00A	1	Analog/Pulse	under development		JZSP-CSI9-1-E	Soldered connector kit
					JZSP-CSI01-□-E *2	Connector cable with flying leads
					CBK-U-MP2B-□□EU *3	CN1 connection; terminal block with cable & screwless clamp connectors
SGDXS-8R4D00A	1	Analog/Pulse	under development		JZSP-CSI9-1-E	Soldered connector kit
					JZSP-CSI01-□-E *2	Connector cable with flying leads
					CBK-U-MP2B-□□EU *3	CN1 connection; terminal block with cable & screwless clamp connectors
SGDXS-120D00A	1	Analog/Pulse	under development		JZSP-CSI9-1-E	Soldered connector kit
					JZSP-CSI01-□-E *2	Connector cable with flying leads
					CBK-U-MP2B-□□EU *3	CN1 connection; terminal block with cable & screwless clamp connectors

*1 The servo drive can be mounted on top of the EMC filter.

*2 □ defines the cable length with 1, 2, or 3 m.

*3 □□ defines the cable length with A5 = 0.5 m, or 01 = 1 m.

*4 □□ defines the cable length with 01 = 1 m, or 03 = 3 m.

*5 □□ defines the cable length with P2 = 0.2 m, P5 = 0.5 m, 01 = 1 m, 03 = 3 m, 05 = 5 m, or 10 = 10 m.



CN8 Safety function cables		Shield clamp	CN7 Computer cable		CN6 Communication cable	
Model	Remarks	Model	Model	Remarks	Model	Remarks
2013595-1	Connector kit	KLBUE 4-13.5 SC	JZSP-CVS06- 02-E	USB-A / Mini-USB cable, length 2.5 m	-	-
JZSP-CVH03- □□-E-G7 *4	Connector cable with flying leads					
-	-					
2013595-1	Connector kit	KLBUE 4-13.5 SC	JZSP-CVS06- 02-E	USB-A / Mini-USB cable, length 2.5 m	-	-
JZSP-CVH03- □□-E-G7 *4	Connector cable with flying leads					
-	-					
2013595-1	Connector kit	KLBUE 4-13.5 SC	JZSP-CVS06- 02-E	USB-A / Mini-USB cable, length 2.5 m	-	-
JZSP-CVH03- □□-E-G7 *4	Connector cable with flying leads					
-	-					
2013595-1	Connector kit	KLBUE 4-13.5 SC	JZSP-CVS06- 02-E	USB-A / Mini-USB cable, length 2.5 m	-	-
JZSP-CVH03- □□-E-G7 *4	Connector cable with flying leads					
-	-					
2013595-1	Connector kit	KLBUE 4-13.5 SC	JZSP-CVS06- 02-E	USB-A / Mini-USB cable, length 2.5 m	-	-
JZSP-CVH03- □□-E-G7 *4	Connector cable with flying leads					
-	-					

Servo drives and accessories

Servo drive			EMC filter		CN1 I/O connection	
Model	Axes	Communication	Model	Top-mount *1	Model	Remarks
SGDXS-170D00A	1	Analog/Pulse	under development		JZSP-CSI9-1-E	Soldered connector kit
					JZSP-CSI01-□-E *2	Connector cable with flying leads
					CBK-U-MP2B-□□EU *3	CN1 connection; terminal block with cable & screwless clamp connectors
SGDXS-210D00A	1	Analog/Pulse	under development		JZSP-CSI9-1-E	Soldered connector kit
					JZSP-CSI01-□-E *2	Connector cable with flying leads
					CBK-U-MP2B-□□EU *3	CN1 connection; terminal block with cable & screwless clamp connectors
SGDXS-260D00A	1	Analog/Pulse	under development		JZSP-CSI9-1-E	Soldered connector kit
					JZSP-CSI01-□-E *2	Connector cable with flying leads
					CBK-U-MP2B-□□EU *3	CN1 connection; terminal block with cable & screwless clamp connectors
SGDXS-280D00A	1	Analog/Pulse	under development		JZSP-CSI9-1-E	Soldered connector kit
					JZSP-CSI01-□-E *2	Connector cable with flying leads
					CBK-U-MP2B-□□EU *3	CN1 connection; terminal block with cable & screwless clamp connectors
SGDXS-370D00A	1	Analog/Pulse	under development		JZSP-CSI9-1-E	Soldered connector kit
					JZSP-CSI01-□-E *2	Connector cable with flying leads
					CBK-U-MP2B-□□EU *3	CN1 connection; terminal block with cable & screwless clamp connectors

*1 The servo drive can be mounted on top of the EMC filter.

*2 □ defines the cable length with 1, 2, or 3 m.

*3 □□ defines the cable length with A5 = 0.5 m, or 01 = 1 m.

*4 □□ defines the cable length with 01 = 1 m, or 03 = 3 m.

*5 □□ defines the cable length with P2 = 0.2 m, P5 = 0.5 m, 01 = 1 m, 03 = 3 m, 05 = 5 m, or 10 = 10 m.



CN8 Safety function cables		Shield clamp	CN7 Computer cable		CN6 Communication cable	
Model	Remarks	Model	Model	Remarks	Model	Remarks
2013595-1	Connector kit	KLBUE 10-20 SC	JZSP-CVS06-02-E	USB-A / Mini-USB cable, length 2.5 m	-	-
JZSP-CVH03-□□-E-G7 *4	Connector cable with flying leads					
-	-					
2013595-1	Connector kit	KLBUE 10-20 SC	JZSP-CVS06-02-E	USB-A / Mini-USB cable, length 2.5 m	-	-
JZSP-CVH03-□□-E-G7 *4	Connector cable with flying leads					
-	-					
2013595-1	Connector kit	KLBUE 10-20 SC	JZSP-CVS06-02-E	USB-A / Mini-USB cable, length 2.5 m	-	-
JZSP-CVH03-□□-E-G7 *4	Connector cable with flying leads					
-	-					
2013595-1	Connector kit	KLBUE 15-32_SC	JZSP-CVS06-02-E	USB-A / Mini-USB cable, length 2.5 m	-	-
JZSP-CVH03-□□-E-G7 *4	Connector cable with flying leads					
-	-					
2013595-1	Connector kit	KLBUE 15-32_SC	JZSP-CVS06-02-E	USB-A / Mini-USB cable, length 2.5 m	-	-
JZSP-CVH03-□□-E-G7 *4	Connector cable with flying leads					
-	-					

Servo drives and accessories

Servo drive			EMC filter		CN1 I/O connection	
Model	Axes	Communication	Model	Top-mount *1	Model	Remarks
SGDXS-1R9DA0A	1	EtherCAT	under development		JZSP-CSI9-2-E	Soldered connector kit
					JZSP-CSI02-□-E *2	Connector cable with flying leads
					SBK-U-VBA-□□EU *3	CN1 connection; terminal block with cable & screwless clamp connectors
SGDXS-3R5DA0A	1	EtherCAT	under development		JZSP-CSI9-2-E	Soldered connector kit
					JZSP-CSI02-□-E *2	Connector cable with flying leads
					SBK-U-VBA-□□EU *3	CN1 connection; terminal block with cable & screwless clamp connectors
SGDXS-5R4DA0A	1	EtherCAT	under development		JZSP-CSI9-2-E	Soldered connector kit
					JZSP-CSI02-□-E *2	Connector cable with flying leads
					SBK-U-VBA-□□EU *3	CN1 connection; terminal block with cable & screwless clamp connectors
SGDXS-8R4DA0A	1	EtherCAT	under development		JZSP-CSI9-2-E	Soldered connector kit
					JZSP-CSI02-□-E *2	Connector cable with flying leads
					SBK-U-VBA-□□EU *3	CN1 connection; terminal block with cable & screwless clamp connectors
SGDXS-120DA0A	1	EtherCAT	under development		JZSP-CSI9-2-E	Soldered connector kit
					JZSP-CSI02-□-E *2	Connector cable with flying leads
					SBK-U-VBA-□□EU *3	CN1 connection; terminal block with cable & screwless clamp connectors

*1 The servo drive can be mounted on top of the EMC filter.

*2 □ defines the cable length with 1, 2, or 3 m.

*3 □□ defines the cable length with 01 = 1 m.

*4 □□ defines the cable length with 01 = 1 m, or 03 = 3 m.

*5 □□ defines the cable length with P2 = 0.2 m, P5 = 0.5 m, 01 = 1 m, 03 = 3 m, 05 = 5 m, or 10 = 10 m.



CN8 Safety function cables		Shield clamp	CN7 Computer cable		CN6 Communication cable	
Model	Remarks	Model	Model	Remarks	Model	Remarks
2013595-1	Connector kit	KLBUE 4-13.5 SC	JZSP-CVS06- 02-E	USB-A / Mini-USB cable, length 2.5 m	JZSP- CM3RRM0- □□-E *5	Communication Cable with RJ45 Connector on both ends
JZSP-CVH03- □□-E-G7 *4	Connector cable with flying leads					
-	-					
2013595-1	Connector kit	KLBUE 4-13.5 SC	JZSP-CVS06- 02-E	USB-A / Mini-USB cable, length 2.5 m	JZSP- CM3RRM0- □□-E *5	Communication Cable with RJ45 Connector on both ends
JZSP-CVH03- □□-E-G7 *4	Connector cable with flying leads					
-	-					
2013595-1	Connector kit	KLBUE 4-13.5 SC	JZSP-CVS06- 02-E	USB-A / Mini-USB cable, length 2.5 m	JZSP- CM3RRM0- □□-E *5	Communication Cable with RJ45 Connector on both ends
JZSP-CVH03- □□-E-G7 *4	Connector cable with flying leads					
-	-					
2013595-1	Connector kit	KLBUE 4-13.5 SC	JZSP-CVS06- 02-E	USB-A / Mini-USB cable, length 2.5 m	JZSP- CM3RRM0- □□-E *5	Communication Cable with RJ45 Connector on both ends
JZSP-CVH03- □□-E-G7 *4	Connector cable with flying leads					
-	-					
2013595-1	Connector kit	KLBUE 4-13.5 SC	JZSP-CVS06- 02-E	USB-A / Mini-USB cable, length 2.5 m	JZSP- CM3RRM0- □□-E *5	Communication Cable with RJ45 Connector on both ends
JZSP-CVH03- □□-E-G7 *4	Connector cable with flying leads					
-	-					

Servo drives and accessories

Servo drive			EMC filter		CN1 I/O connection	
Model	Axes	Communication	Model	Top-mount *1	Model	Remarks
SGDXS-170DA0A	1	EtherCAT	under development		JZSP-CSI9-2-E	Soldered connector kit
					JZSP-CSI02-□-E *2	Connector cable with flying leads
					SBK-U-VBA-□□EU *3	CN1 connection; terminal block with cable & screwless clamp connectors
SGDXS-210DA0A	1	EtherCAT	under development		JZSP-CSI9-2-E	Soldered connector kit
					JZSP-CSI02-□-E *2	Connector cable with flying leads
					SBK-U-VBA-□□EU *3	CN1 connection; terminal block with cable & screwless clamp connectors
SGDXS-260DA0A	1	EtherCAT	under development		JZSP-CSI9-2-E	Soldered connector kit
					JZSP-CSI02-□-E *2	Connector cable with flying leads
					SBK-U-VBA-□□EU *3	CN1 connection; terminal block with cable & screwless clamp connectors
SGDXS-280DA0A	1	EtherCAT	under development		JZSP-CSI9-2-E	Soldered connector kit
					JZSP-CSI02-□-E *2	Connector cable with flying leads
					SBK-U-VBA-□□EU *3	CN1 connection; terminal block with cable & screwless clamp connectors
SGDXS-370DA0A	1	EtherCAT	under development		JZSP-CSI9-2-E	Soldered connector kit
					JZSP-CSI02-□-E *2	Connector cable with flying leads
					SBK-U-VBA-□□EU *3	CN1 connection; terminal block with cable & screwless clamp connectors

*1 The servo drive can be mounted on top of the EMC filter.

*2 □ defines the cable length with 1, 2, or 3 m.

*3 □□ defines the cable length with 01 = 1 m.

*4 □□ defines the cable length with 01 = 1 m, or 03 = 3 m.

*5 □□ defines the cable length with P2 = 0.2 m, P5 = 0.5 m, 01 = 1 m, 03 = 3 m, 05 = 5 m, or 10 = 10 m.



CN8 Safety function cables		Shield clamp	CN7 Computer cable		CN6 Communication cable	
Model	Remarks	Model	Model	Remarks	Model	Remarks
2013595-1	Connector kit	KLBUE 10-20 SC	JZSP-CVS06- 02-E	USB-A / Mini-USB cable, length 2.5 m	JZSP- CM3RRM0- □□-E *5	Communication Cable with RJ45 Connector on both ends
JZSP-CVH03- □□-E-G7 *4	Connector cable with flying leads					
-	-					
2013595-1	Connector kit	KLBUE 10-20 SC	JZSP-CVS06- 02-E	USB-A / Mini-USB cable, length 2.5 m	JZSP- CM3RRM0- □□-E *5	Communication Cable with RJ45 Connector on both ends
JZSP-CVH03- □□-E-G7 *4	Connector cable with flying leads					
-	-					
2013595-1	Connector kit	KLBUE 10-20 SC	JZSP-CVS06- 02-E	USB-A / Mini-USB cable, length 2.5 m	JZSP- CM3RRM0- □□-E *5	Communication Cable with RJ45 Connector on both ends
JZSP-CVH03- □□-E-G7 *4	Connector cable with flying leads					
-	-					
2013595-1	Connector kit	KLBUE 15-32_SC	JZSP-CVS06- 02-E	USB-A / Mini-USB cable, length 2.5 m	JZSP- CM3RRM0- □□-E *5	Communication Cable with RJ45 Connector on both ends
JZSP-CVH03- □□-E-G7 *4	Connector cable with flying leads					
-	-					
2013595-1	Connector kit	KLBUE 15-32_SC	JZSP-CVS06- 02-E	USB-A / Mini-USB cable, length 2.5 m	JZSP- CM3RRM0- □□-E *5	Communication Cable with RJ45 Connector on both ends
JZSP-CVH03- □□-E-G7 *4	Connector cable with flying leads					
-	-					

Safety for servo drives

SGDXS
Single axis

Servo drive		Advanced safety module		
Model	Communication	Model	Interface	Mounting kit
SGDXS-□□□A00A	Analog Pulse	SGDXS-OSA01A	Digital I/O	SGDXS-OZA01A
SGDXS-□□□AA0A	EtherCAT	SGDXS-OSA01A	Digital I/O	SGDXS-OZA01A
		SGDXS-OSAA0A	Safety over EtherCAT (FSoE)	
		SGDXS-OSAA1A	Safety over EtherCAT (FSoE), with Digital I/O	
SGDXS-□□□A40A	Mechatrolink-4/III	SGDXS-OSA01A	Digital I/O	SGDXS-OZA01A

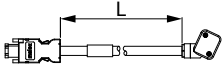
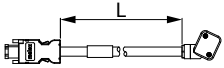
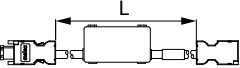
Option modules for servo drives

SGDXS
Single axis

Servo drive		Option module		
Model	Communication	Model	Interface	Mounting kit
SGDXS-□□□A00A	Analog Pulse	SGDV-OFA01A	Yaskawa Protocol	SGDXS-OZA01A
		SGDV-OFB01A-G2	Serial and Sin/Cos Encoder; EnDat 2.1 2.2; Hiperface	
		SGDV-OFB03A-G2	Pulse A quad B Encoders	
		SGDV-OFB04A-G2	Resolver	
SGDXS-□□□AA0A	EtherCAT	SGDV-OFA01A	Yaskawa Protocol	SGDXS-OZA01A
		SGDV-OFB01A-G2	Serial and Sin/Cos Encoder; EnDat 2.1 2.2; Hiperface	
		SGDV-OFB03A-G2	Pulse A quad B Encoders	
		SGDV-OFB04A-G2	Resolver	
SGDXS-□□□A40A	Mechatrolink-4/III	SGDV-OFA01A	Yaskawa Protocol	SGDXS-OZA01A
		SGDV-OFB01A-G2	Serial and Sin/Cos Encoder; EnDat 2.1 2.2; Hiperface	
		SGDV-OFB03A-G2	Pulse A quad B Encoders	
		SGDV-OFB04A-G2	Resolver	

Cables

Encoder
cables

Encoder cable			
Model	Length	Specification	Appearance
JWSP-XP2IF1-03-G7	3 m	For batteryless absolute encoder	SERVOPACK end Encoder end 
JWSP-XP2IF1-05-G7	5 m		
JWSP-XP2IF1-10-G7	10 m		
JWSP-XP2IF1-15-G7	15 m		
JWSP-XP2IF1-20-G7	20 m		
JWSP-XP2IF2-03-G7	3 m	For batteryless absolute encoder	SERVOPACK end Encoder end 
JWSP-XP2IF2-05-G7	5 m		
JWSP-XP2IF2-10-G7	10 m		
JWSP-XP2IF2-15-G7	15 m		
JWSP-XP2IF2-20-G7	20 m		
JZSP-CSP12-E-G5	0.3 m	Cable with battery case (Required when an absolute encoder is used.)	SERVOPACK end Encoder end  Battery unit (battery included)

* On request.

Cables

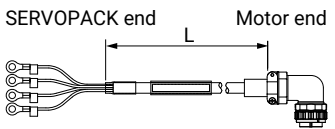
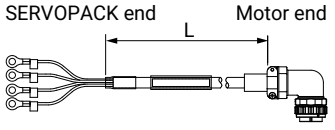
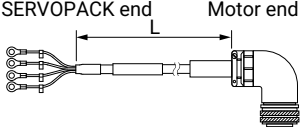
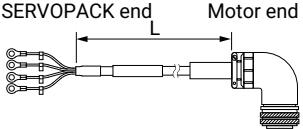
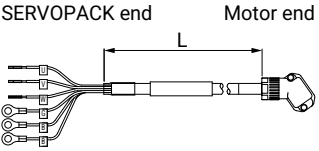
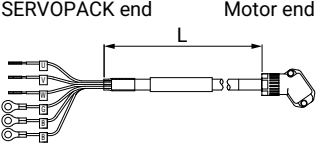
Power cables

Power cable			
Model	Length	Specification	Appearance
JWSP-XM08BF1-03-M7	3 m	For servo motors with holding brakes Cable installed toward load	
JWSP-XM08BF1-05-M7	5 m		
JWSP-XM08BF1-10-M7	10 m		
JWSP-XM08BF1-15-M7	15 m		
JWSP-XM08BF1-20-M7	20 m		
JWSP-XM08BF2-03-M7	3 m	For servo motors with holding brakes Cable installed away from load *	
JWSP-XM08BF2-05-M7	5 m		
JWSP-XM08BF2-10-M7	10 m		
JWSP-XM08BF2-15-M7	15 m		
JWSP-XM08BF2-20-M7	20 m		
JWSP-XM08NF1-03-M7	3 m	For servo motors without holding brakes Cable installed toward load	
JWSP-XM08NF1-05-M7	5 m		
JWSP-XM08NF1-10-M7	10 m		
JWSP-XM08NF1-15-M7	15 m		
JWSP-XM08NF1-20-M7	20 m		
JWSP-XM08NF2-03-M7	3 m	For servo motors without holding brakes Cable installed away from load *	
JWSP-XM08NF2-05-M7	5 m		
JWSP-XM08NF2-10-M7	10 m		
JWSP-XM08NF2-15-M7	15 m		
JWSP-XM08NF2-20-M7	20 m		
JWSP-XM15NFL-03-D7	3 m	For servo motors with or without holding brakes Right-angle plug	
JWSP-XM15NFL-05-D7	5 m		
JWSP-XM15NFL-10-D7	10 m		
JWSP-XM15NFL-15-D7	15 m		
JWSP-XM15NFL-20-D7	20 m		
JWSP-XM15NFL-03-G7	3 m	For servo motors with or without holding brakes Right-angle plug	
JWSP-XM15NFL-05-G7	5 m		
JWSP-XM15NFL-10-G7	10 m		
JWSP-XM15NFL-15-G7	15 m		
JWSP-XM15NFL-20-G7	20 m		
JWSP-XM1ANFL-03-D7	3 m	For servo motors with or without holding brakes Right-angle plug	
JWSP-XM1ANFL-05-D7	5 m		
JWSP-XM1ANFL-10-D7	10 m		
JWSP-XM1ANFL-15-D7	15 m		
JWSP-XM1ANFL-20-D7	20 m		

* On request.

Cables

Power cables

Power cable			
Model	Length	Specification	Appearance
JWSP-XM20NFL-03-D7	3 m	For servo motors with or without holding brakes Right-angle plug	 <p>SERVOPACK end Motor end</p> <p>L</p>
JWSP-XM20NFL-05-D7	5 m		
JWSP-XM20NFL-10-D7	10 m		
JWSP-XM20NFL-15-D7	15 m		
JWSP-XM20NFL-20-D7	20 m		
JWSP-XM30NFL-03-D7	3 m	For servo motors with or without holding brakes Right-angle plug	 <p>SERVOPACK end Motor end</p> <p>L</p>
JWSP-XM30NFL-05-D7	5 m		
JWSP-XM30NFL-10-D7	10 m		
JWSP-XM30NFL-15-D7	15 m		
JWSP-XM30NFL-20-D7	20 m		
JWSP-XM55NFL-03-D7	3 m	For servo motors with or without holding brakes Right-angle plug	 <p>SERVOPACK end Motor end</p> <p>L</p>
JWSP-XM55NFL-05-D7	5 m		
JWSP-XM55NFL-10-D7	10 m		
JWSP-XM55NFL-15-D7	15 m		
JWSP-XM55NFL-20-D7	20 m		
JWSP-XM5BNFL-03-D7	3 m	For servo motors with or without holding brakes Right-angle plug	 <p>SERVOPACK end Motor end</p> <p>L</p>
JWSP-XM5BNFL-05-D7	5 m		
JWSP-XM5BNFL-10-D7	10 m		
JWSP-XM5BNFL-15-D7	15 m		
JWSP-XM5BNFL-20-D7	20 m		
JWSP-XMA5BF1-03-M7	3 m	For servo motors with holding brakes Cable installed toward load	 <p>SERVOPACK end Motor end</p> <p>L</p>
JWSP-XMA5BF1-05-M7	5 m		
JWSP-XMA5BF1-10-M7	10 m		
JWSP-XMA5BF1-15-M7	15 m		
JWSP-XMA5BF1-20-M7	20 m		
JWSP-XMA5BF2-03-M7	3 m	For servo motors with holding brakes Cable installed away from load *	 <p>SERVOPACK end Motor end</p> <p>L</p>
JWSP-XMA5BF2-05-M7	5 m		
JWSP-XMA5BF2-10-M7	10 m		
JWSP-XMA5BF2-15-M7	15 m		
JWSP-XMA5BF2-20-M7	20 m		

* On request.

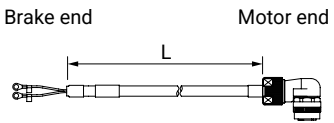
Cables

Power cables

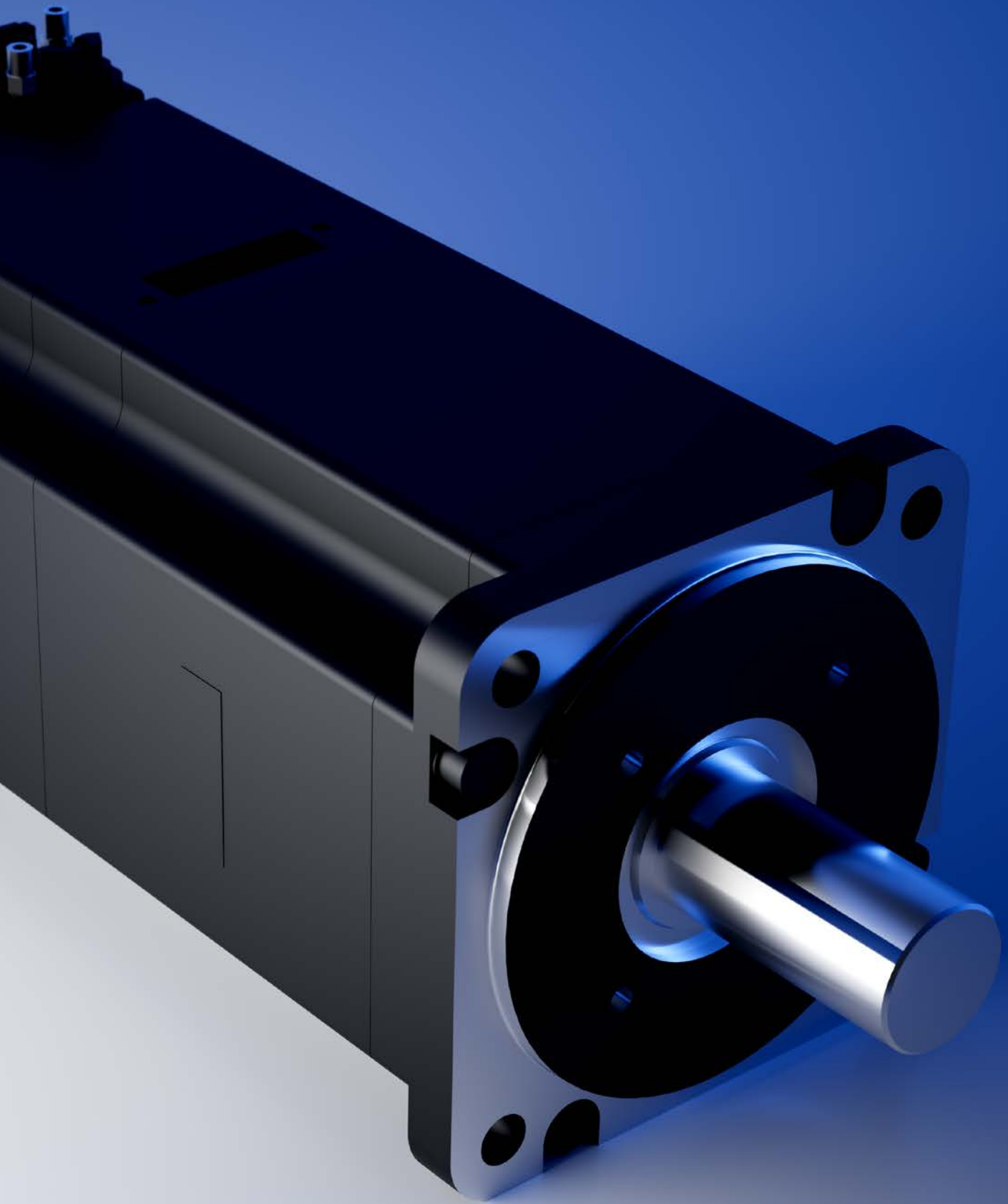
Power cable			
Model	Length	Specification	Appearance
JWSP-XMA5NF1-03-M7	3 m	For servo motors without holding brakes Cable installed toward load	
JWSP-XMA5NF1-05-M7	5 m		
JWSP-XMA5NF1-10-M7	10 m		
JWSP-XMA5NF1-15-M7	15 m		
JWSP-XMA5NF1-20-M7	20 m		
JWSP-XMA5NF2-03-M7	3 m	For servo motors without holding brakes Cable installed away from load *	
JWSP-XMA5NF2-05-M7	5 m		
JWSP-XMA5NF2-10-M7	10 m		
JWSP-XMA5NF2-15-M7	15 m		
JWSP-XMA5NF2-20-M7	20 m		
JZSP-CVM21-03-E-G7	3 m	For servo motors without holding brakes	
JZSP-CVM21-05-E-G7	5 m		
JZSP-CVM21-10-E-G7	10 m		
JZSP-CVM21-15-E-G7	15 m		
JZSP-CVM21-20-E-G7	20 m		
JZSP-CVM41-03-E-G7	3 m	For servo motors with holding brakes	
JZSP-CVM41-05-E-G7	5 m		
JZSP-CVM41-10-E-G7	10 m		
JZSP-CVM41-15-E-G7	15 m		
JZSP-CVM41-20-E-G7	20 m		

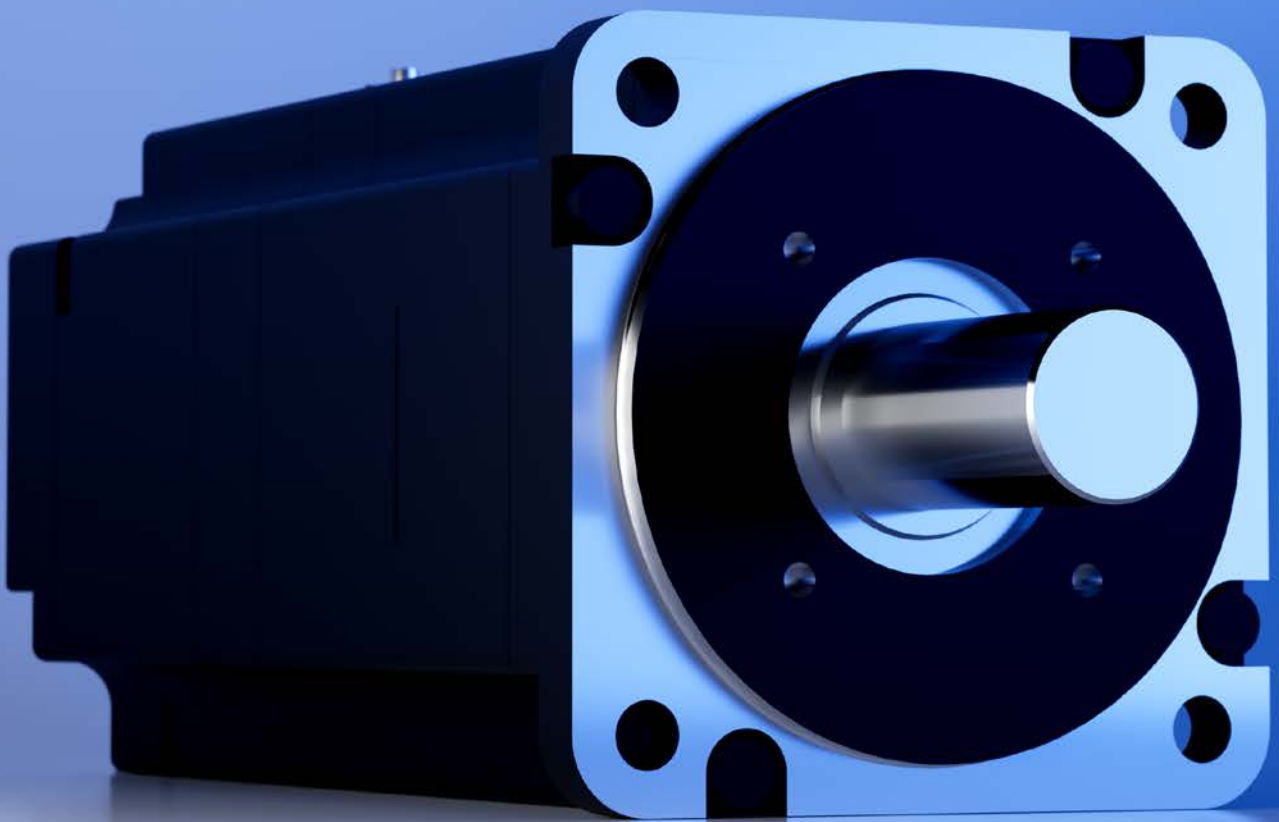
Cables

Brake
cables

Brake cable			
Model	Length	Specification	Appearance
JWSP-XB0FL-03-G7	3 m	Holding brake cable	 <p>The diagram shows a horizontal cable with a 'Brake end' on the left and a 'Motor end' on the right. A dimension line labeled 'L' indicates the length of the cable between the two ends. The cable has a braided outer sheath and a central core.</p>
JWSP-XB0FL-05-G7	5 m		
JWSP-XB0FL-10-G7	10 m		
JWSP-XB0FL-15-G7	15 m		
JWSP-XB0FL-20-G7	20 m		









YASKAWA Europe GmbH

Philipp-Reis-Str. 6
65795 Hattersheim am Main
Germany

+49 6196 569-500
support@yaskawa.eu
www.yaskawa.eu.com

YEU_MuC_Sigma-X_SalesCat | EN | v2

06/2026