

Machine Controller MP2500 Drawing Tools for MotionScreen Install Guide



Notes regarding this product and its package

1. This product is protected by Japanese copyright laws. It is strictly prohibited to use or copy the whole or a part of this software without the permission of the manufacturer.
2. Yaskawa is not responsible for any consequences resulting from the use of this software and the manual.
3. The specifications of this software and the topics described in this manual are subject to change without notice.

Microsoft, MS, MS-DOS, Windows, and Windows NT are registered trademarks of Microsoft Corporation in the United States of America and other countries.

Other company and product names appearing herein are trademarks or registered trademarks of their respective companies.

Related Manuals

Refer to the following related manuals as required.

Related Manuals	Manual Number
Machine Controller MP2500 Drawing Tools for MotionScreen Tutorial Manual	SIIPC88075202
Machine Controller MP2500 Drawing Tools for MotionScreen User's Manual MotionScreen Builder	SIIPC88075203
Machine Controller MP2500 Drawing Tools for MotionScreen User's Manual Macro Functions	SIIPC88075204
Machine Controller MP2500 Drawing Tools for MotionScreen User's Manual MotionScreen Run	SIIPC88075205
Machine Controller MP2500 Drawing Tools for MotionScreen Reference Manual	SIIPC88075206
Machine Controller MP2500 Drawing Tools for MotionScreen User's Manual Shared Memory Server	SIIPC88075207

● Safety Precautions ●


(Read before using)

When using MotionScreen, read the manual included with each product as well as any related manuals described therein. Observe all safety precautions when using MotionScreen.

The safety precautions described herein are ranked as "Cautions".



The term "Caution" is applied in situations when improper handling of a product could result in injuries of medium severity, light wounds, and/or property damage.

Topics described under the  "Caution" heading may, depending on the situation, have severe consequences.

All of the safety precautions contain very important information. Make sure to follow those directions carefully.

Keep the manuals of this product readily available for referencing as required, and make sure that they are provided to the end-user of this product.

[Caution for System Design]

Caution

- Configure an interlock circuit on the program by using communication status information, so that the system will function safely in the event of an MotionScreen communication fault.
Illegal output or malfunction may lead to accidents.

Notation

The following topics, which are necessary when using this product, are described below.

MEMO

Additional information regarding operation, descriptions, and settings is provided.



IMPORTANT

This gives the user important information regarding handling, that is required for ensuring safety.

Important information regarding operation, descriptions, and settings is provided.



Table of contents

Chapter 1 Introduction

1-1 MotionScreen: An Overview	1-1
1-2 Compatible Operating Systems	1-3

Chapter 2 Installing MotionScreen

2-1 Before Installation	2-1
2-2 Installing MotionScreen	2-2
2-3 Uninstalling MotionScreen	2-6
2-4 Reinstalling MotionScreen	2-8

Chapter 3 How to Start MotionScreen

3-1 How to Start MotionScreen Builder	3-1
3-2 How to Start MotionScreen Run	3-2
3-3 How to Start INTAUTILITY (Shared Memory Batch Monitor)	3-3

Chapter 4 How to Exit MotionScreen

4-1 How to Exit MotionScreen Builder	4-1
4-2 How to Exit MotionScreen Run	4-2
4-3 How to Exit INTAUTILITY	4-3

Chapter 1 Introduction

This chapter describes an overview of MotionScreen and the description of the software components.

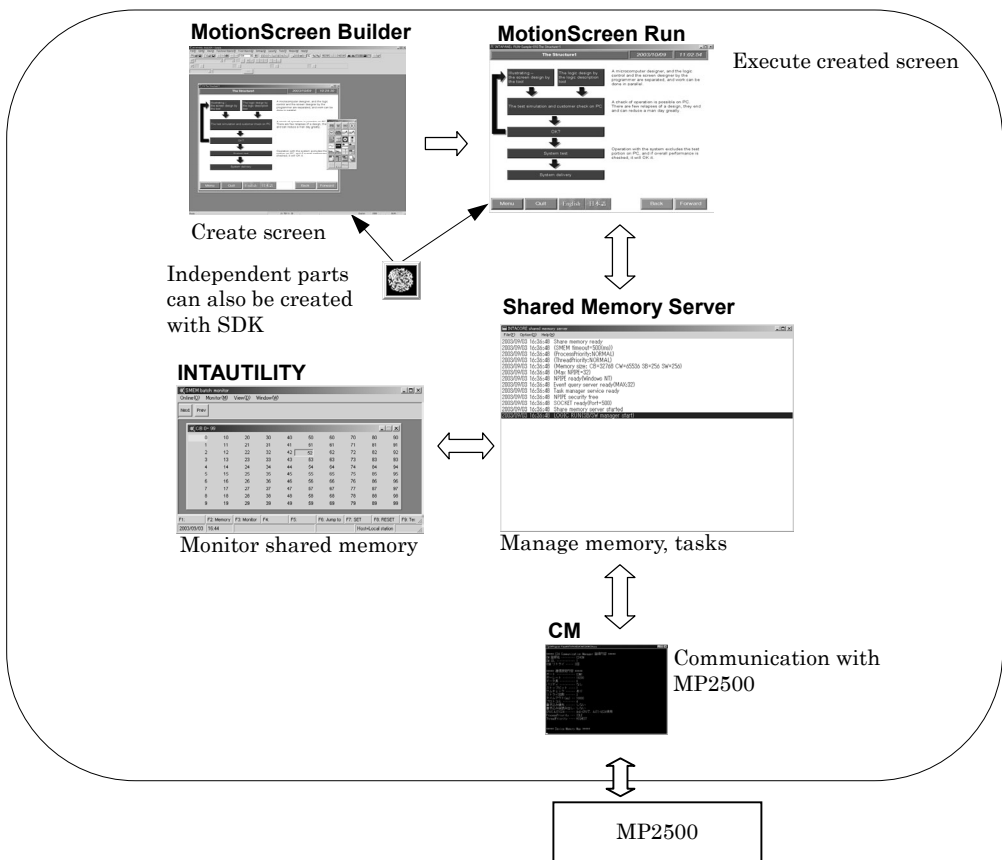
1-1 MotionScreen: An Overview	1 – 1
1-2 Compatible Operating Systems	1 – 3

Install Guide

1-1 MotionScreen: An Overview

MotionScreen is a development software program that can be used to create screen applications for the panel-type MP2500 (M) Machine Controller without writing programming code.

MotionScreen is equipped with the common functions necessary for the development of terminal applications used in control and information equipment, such as operation, alarm, log, and recipe functions. MotionScreen strongly supports the development of applications.



MotionScreen software components

MotionScreen includes the following software components:

MotionScreen Builder

This tool is used to create screen data. Builder operates according to the Windows graphical interface and operation preferences, allowing the easy creation of screen data.

MotionScreen Run

This is used to execute screen data created with MotionScreen Builder.

Shared memory server

The shared memory server provides shared memory information for all applications that can be connected. In addition, it manages command messages sent from multiple applications to a single application.

INTAUTILITY (shared memory batch monitor)

This is used to monitor and write the status of the shared memory.

CM

This performs communication between the shared memory server and external devices.

The CM for the MP2500 is shown as attached on the MotionScreen by default.

1-2 Compatible Operating Systems

MotionScreen is compatible with the following operating systems:

Builder

- Windows98 (SE)
- Windows NT Workstation 4.0
- Windows2000
- WindowsXP

Run

- WindowsXP Embedded Edition

Chapter 2 Installing MotionScreen

When using MotionScreen for the first time, it is necessary to install MotionScreen software on your PC.

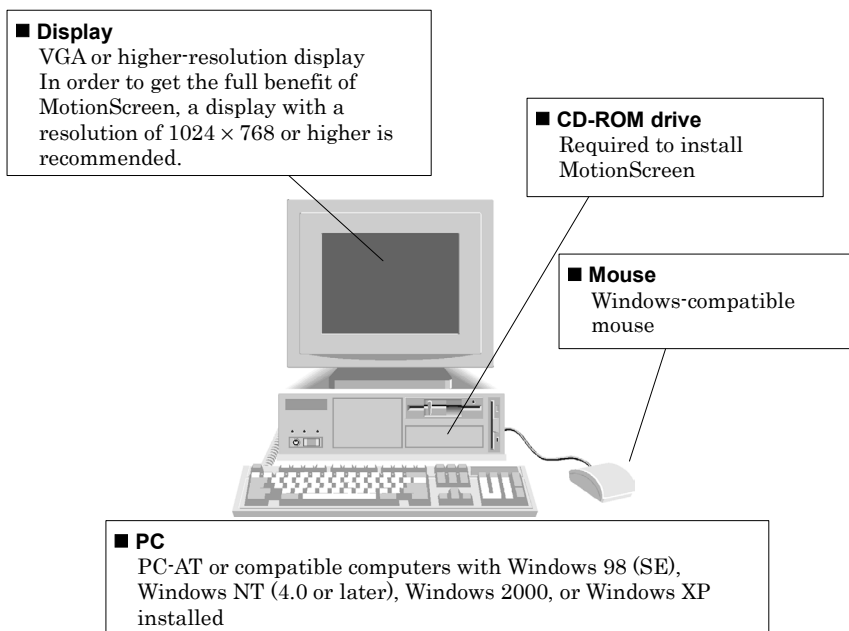
MotionScreen is an application software that runs on Microsoft Corporation's Windows 98 (SE)/NT4.0/2000/XP.

This chapter describes how to install and uninstall MotionScreen on systems operating on Windows 98 (SE)/NT4.0/2000/XP.

2-1 Before Installation	2 – 1
2-2 Installing MotionScreen	2 – 2
2-3 Uninstalling MotionScreen	2 – 6
2-4 Reinstalling MotionScreen	2 – 8

2-1 Before Installation

Before installing MotionScreen, verify that the following conditions are met:



Required system

- ◆ **CPU** Minimum Pentium 100MHz processor
- ◆ **Recommended memory** 32MB or more recommended.
- ◆ **HDD** 50MB of free space or more is recommended.

2-2 Installing MotionScreen

Install MotionScreen on the HDD.

To install MotionScreen, execute the provided installation program.

The following applications will be installed when installing MotionScreen:

- MotionScreen Builder

Procedures

1. Start Windows 98 (SE)/NT4.0/2000/XP. (The following procedures assume the use of Windows 2000.)
2. Place the MotionScreen CD-ROM in the CD-ROM drive.
Select the Windows [Start] button and [Run], and execute [Setup.exe] included in MotionScreen CD-ROM to run the set-up program.
3. The MotionScreen set-up screen will appear.
If you agree with the content, click the [Next] button. Click the [Cancel] button to cancel MotionScreen set-up.



Install Guide

- The installation destination specification screen will appear. Select the directory in which you would like to install MotionScreen. MotionScreen will be installed in the following directory by default:

C:\Program Files\MotionScreen

To change the default directory, click the [Browse] button and specify the desired drive and directory. (If the specified directory does not exist, it will automatically be created.)



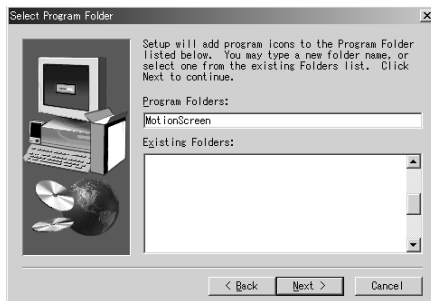
Click the [Next] button when the specification is completed.

5. The screen at which the registration destination in the start menu can be specified will appear. Specify the folder in the Windows start menu where the MotionScreen shortcut will be created.

As the default, the shortcut will be created in the following folder:

Start\Program\MotionScreen

To change the default, select the desired folder from [Existing Folders] or enter the folder name. (If the specified folder does not exist, it will automatically be created.) The folder name must be specified using single-byte characters.



When specification is completed, click the [Next] button. Installation will be executed and the specified files will be copied.

The percentage of installation completed is displayed onscreen during installation.

6. When the installation is completed, the [Setup Complete] screen will appear.

**IMPORTANT**

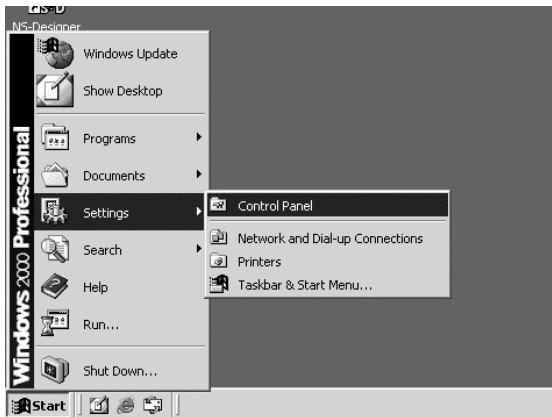
- ◆ After installation, you should reboot the PC before using MotionScreen.
- ◆ On Windows NT4.0 systems, log in as an administrator. Not doing so may prevent overwrite of Windows system DLLs, and the program will not run properly.

2-3 Uninstalling MotionScreen

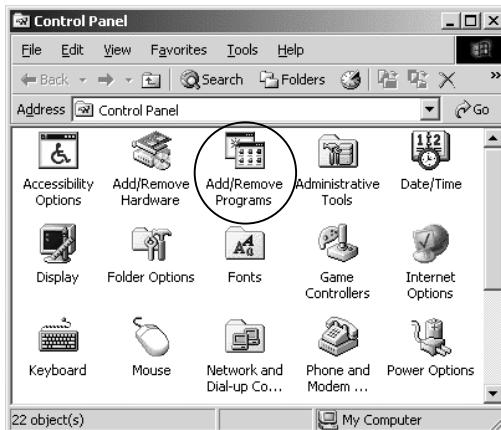
This section describes how to uninstall MotionScreen.

Procedures

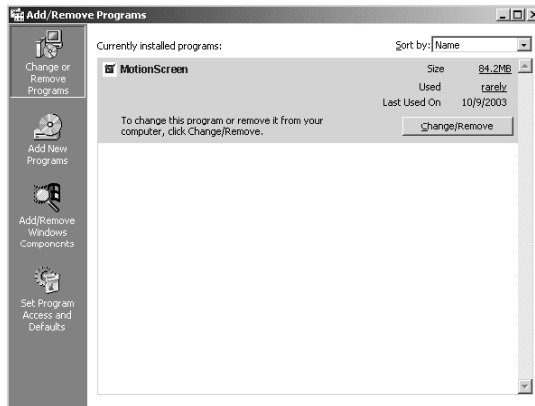
1. Start Windows 98 (SE)/NT4.0/2000/XP. (The following procedures assume the use of Windows 2000.)
2. Click the [Start] button, and then select [Settings] and then [Control Panel].



3. Double-click [Add/Remove Programs].



4. Select “MotionScreen” from the list, and click the [Change/Remove] button.



5. When the uninstallation of the software is completed, the message “Uninstallation is completed” will appear. Confirm the content of the onscreen message; click the [OK] button.

2-4 Reinstalling MotionScreen

This section describes how to reinstall MotionScreen.

Procedures

1. Follow the procedures described in “Uninstalling MotionScreen” to uninstall MotionScreen. After uninstalling MotionScreen, select [Add/Remove Programs] to verify that “MotionScreen” has been removed from the list.
2. Follow the steps in “2-2 Installing MotionScreen” and “2-3 Installing SDK” to install MotionScreen.
3. If the message “MotionScreen has been installed” is displayed during installation, click [No], follow the procedures described in “2-4 Uninstalling MotionScreen” to uninstall MotionScreen again, and retry installation.

Chapter 3 How to Start MotionScreen

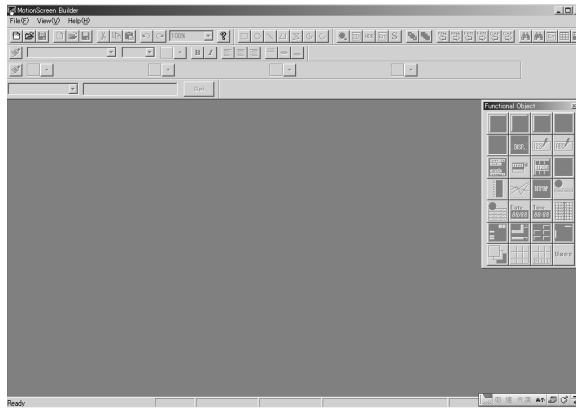
This chapter describes how to start each MotionScreen software component.

3-1 How to Start MotionScreen Builder.....	3 – 1
3-2 How to Start MotionScreen Run	3 – 2
3-3 How to Start INTAUTILITY (Shared Memory Batch Monitor).....	3 – 3

3-1 How to Start MotionScreen Builder

To start Builder, click on the Windows [Start] button, and select [Program] → [MotionScreen] → [MotionScreen Builder]. (The displayed items may vary depending on the “program folder” specified during the installation.)

When Builder is started, the main window will appear as shown below.



MEMO

- ◆ Multiple instances of Builder can be run simultaneously.
- ◆ To start Builder by specifying a file name, specify “BLD.EXE” from the MotionScreen installation folder. (The default location is C:\Program Files\MotionScreen.)

3-2 How to Start MotionScreen Run

Run is executed on the MP2500.

Start C:\Program Files\MotionScreen\INTACORE.EXE.

When Run is started, the main window will appear as shown below.



MEMO

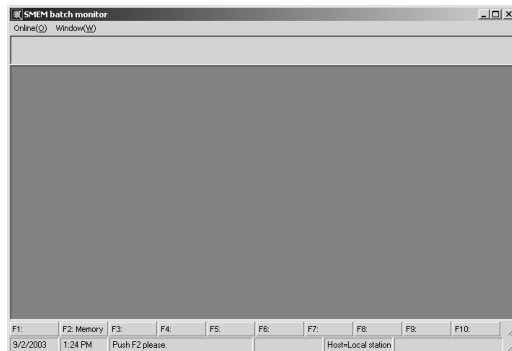
- ◆ Multiple instances of Run cannot be run simultaneously.
- ◆ When Run is started, the project made with Builder opens automatically.
At the same time, the CM starts automatically.

3-3 How to Start INTAUTILITY (Shared Memory Batch Monitor)

To start INTAUTILITY (shared memory batch monitor), run the following executable file.

C:\Program Files\MotionScreen\IntaUtility.exe

When INTAUTILITY is started, the main window will appear as shown below.



MEMO

- ◆ Multiple instances of INTAUTILITY can be started simultaneously.
- ◆ INTAUTILITY can be started even if the shared memory server is not running. However, there will be no target (shared memory) to monitor. INTAUTILITY should be used while the shared memory server is running.


Chapter 4 How to Exit MotionScreen

This chapter describes how to exit each MotionScreen software component.

4-1 How to Exit MotionScreen Builder.....	4 – 1
4-2 How to Exit MotionScreen Run	4 – 2
4-3 How to Exit INTAUTILITY	4 – 3

4-1 How to Exit MotionScreen Builder

Follow one of the procedures described below to exit MotionScreen Builder:


- Select [Exit] from the [File] menu.
- Click the  button on the upper right of the main window.
- Double-click the icon on the upper left of the main window.
- Click the icon on the upper left of the main window; select [Close] from the displayed control menu box.
- Press the [F4] key while pressing the [Alt] key.

MEMO

- ◆ If the currently opened project data is not saved, a confirmation message will appear when exiting the application.

4-2 How to Exit MotionScreen Run

Follow one of the procedures described below to exit MotionScreen Run:


- Click the command button for exiting MotionScreen Run.
- Turn ON the system CB for exiting MotionScreen Run. (The default is CB4015.)
- Select [Exit] from the [File] menu.
- Click the  button on the upper right of the window.
- Double-click the icon on the upper left of the window.
- Click the icon on the upper left of the window; select [Close] from the displayed control menu box.
- Press the [F4] key while pressing the [Alt] key.

MEMO

- ◆ For details on the command button for exiting MotionScreen Run, refer to “3-2 Button” in the Reference Manual.
- ◆ For details on system CB, refer to “1-3 Shared Memory” in the Reference Manual.
- ◆ If the title bar is not displayed in the MotionScreen Run window, double-click the window to make changes to the window style.

4-3 How to Exit INTAUTILITY

Follow one of the procedures described below to exit the INTAUTILITY:

- Select [Exit] /[Shut down system] from the [File] menu.
- Turn ON SB255.
- Click the  button on the upper right of the window.
- Double-click the icon on the upper left of the window.
- Click the icon on the upper left of the window; select [Close] from the displayed control menu box.
- Press the [F4] key while pressing the [Alt] key.

Revision History

The revision dates and numbers of the revised manuals are given on the bottom of the back cover.

MANUAL NO. SIEP C880752 01A

© Printed in Japan May 2005 05-5

└─ Date of printing └─ Date of original publication

Date of Printing	Rev. No.	Section	Revised Content
May 2005	—		First edition: Based on Japanese user's manual for the machine controller MP2500 drawing tools for MotionScreen Install Guide printed in February 2005. (Manual No.: SIJPC88075201A)



Product Application

- This product is neither designed nor manufactured for the purpose of being used in devices or systems in life-threatening situations.
- Ask our customer service any questions regarding special usage of this product in devices or systems, including but not limited to the following fields: vehicle, medical equipment, aerospace related, nuclear related, electric power generation and relays stations of a sub-marine cable.
- Although this product was manufactured under strict quality standards, safety devices must be installed when it is used in conjunction with other equipment and when a malfunction could lead to a severe accident and serious damage.

Machine Controller MP2500

Drawing Tools for MotionScreen

Install Guide

IRUMA BUSINESS CENTER

480, Kamifujisawa, Iruma, Saitama 358-8555, Japan
Phone 81-4-2962-5696 Fax 81-4-2962-6138

YASKAWA ELECTRIC AMERICA, INC.

2121 Norman Drive South, Waukegan, IL 60085, U.S.A.
Phone 1-847-887-7000 Fax 1-847-887-7370

MOTOMAN INC. HEADQUARTERS

805 Liberty Lane West Carrollton, OH 45449, U.S.A.
Phone 1-937-847-6200 Fax 1-937-847-6277

YASKAWA ELÉTRICO DO BRASIL COMÉRCIO LTD.A.

Avenida Fagundes Filho, 620 Bairro Saude-Sao Paulo-SP, Brazil CEP: 04304-000
Phone 55-11-5071-2552 Fax 55-11-5581-8795

YASKAWA ELECTRIC EUROPE GmbH

Am Kronberger Hang 2, 65824 Schwalbach, Germany
Phone 49-6196-569-300 Fax 49-6196-569-312

Motoman Robotics Europe AB

Box 504 S38525 Torsås, Sweden
Phone 46-486-48800 Fax 46-486-41410

Motoman Robotec GmbH

Kammerfeldstraße 1, 85391 Allershausen, Germany
Phone 49-8166-90-100 Fax 49-8166-90-103

YASKAWA ELECTRIC UK LTD.

1 Hunt Hill Orchardton Woods Cumbernauld, G68 9LF, United Kingdom
Phone 44-1236-735000 Fax 44-1236-458182

YASKAWA ELECTRIC KOREA CORPORATION

7F, Doore Bldg. 24, Yeoido-dong, Youngdungpo-Ku, Seoul 150-877, Korea
Phone 82-2-784-7844 Fax 82-2-784-8495

YASKAWA ELECTRIC (SINGAPORE) PTE. LTD.

151 Lorong Chuan, #04-01, New Tech Park Singapore 556741, Singapore
Phone 65-6282-3003 Fax 65-6289-3003

YASKAWA ELECTRIC (SHANGHAI) CO., LTD.

No.18 Xizang Zhong Road. Room 1805, Harbour Ring Plaza Shanghai 20000, China
Phone 86-21-5385-2200 Fax 86-21-5385-3299

YATEC ENGINEERING CORPORATION

4F., No.49 Wu Kong 6 Rd, Wu-Ku Industrial Park, Taipei, Taiwan
Phone 886-2-2298-3676 Fax 886-2-2298-3677

YASKAWA ELECTRIC (HK) COMPANY LIMITED

Rm. 2909-10, Hong Kong Plaza, 186-191 Connaught Road West, Hong Kong
Phone 852-2803-2385 Fax 852-2547-5773

BEIJING OFFICE

Room No. 301 Office Building of Beijing International Club, 21
Jianguomenwai Avenue, Beijing 100020, China
Phone 86-10-6532-1850 Fax 86-10-6532-1851

TAIPEI OFFICE

9F, 16, Nanking E. Rd., Sec. 3, Taipei, Taiwan
Phone 886-2-2502-5003 Fax 886-2-2505-1280

SHANGHAI YASKAWA-TONGJI M & E CO., LTD.

27 Hui He Road Shanghai China 200437
Phone 86-21-6553-6060 Fax 86-21-5588-1190

BEIJING YASKAWA BEIKE AUTOMATION ENGINEERING CO., LTD.

30 Xue Yuan Road, Haidian, Beijing P.R. China Post Code: 100083
Phone 86-10-6233-2782 Fax 86-10-6232-1536

SHOUGANG MOTOMAN ROBOT CO., LTD.

7, Yongchang-North Street, Beijing Economic Technological Investment & Development Area,
Beijing 100076, P.R. China
Phone 86-10-6788-0551 Fax 86-10-6788-2878



YASKAWA ELECTRIC CORPORATION

YASKAWA

In the event that the end user of this product is to be the military and said product is to be employed in any weapons systems or the manufacture thereof, the export will fall under the relevant regulations as stipulated in the Foreign Exchange and Foreign Trade Regulations. Therefore, be sure to follow all procedures and submit all relevant documentation according to and all rules, regulations and laws that may apply.

Specifications are subject to change without notice for ongoing product modifications and improvements.

© 2005 YASKAWA ELECTRIC CORPORATION. All rights reserved.

MANUAL NO. SIEP C880752 01A

Printed in Japan May 2005 05-5
04-8®