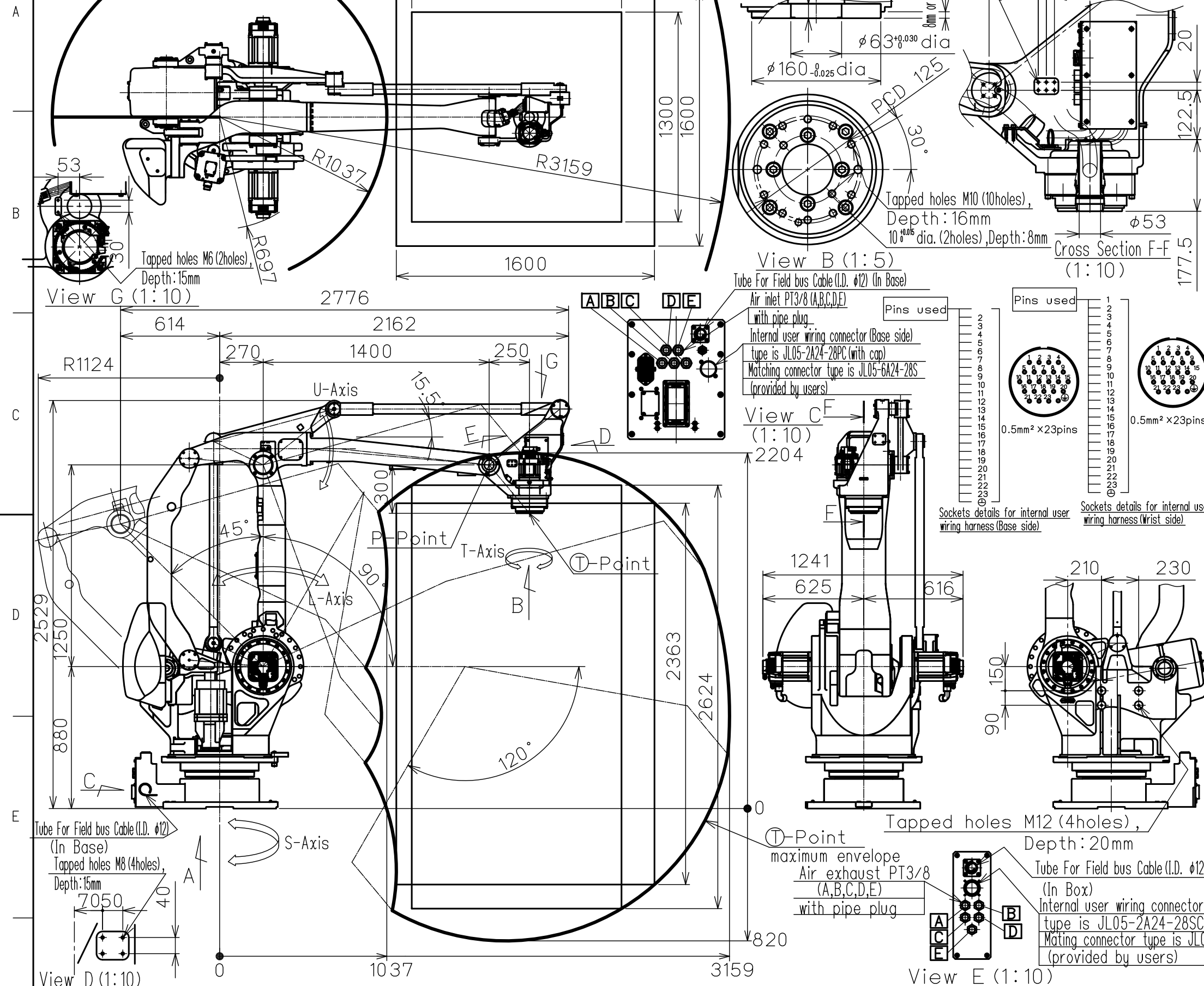


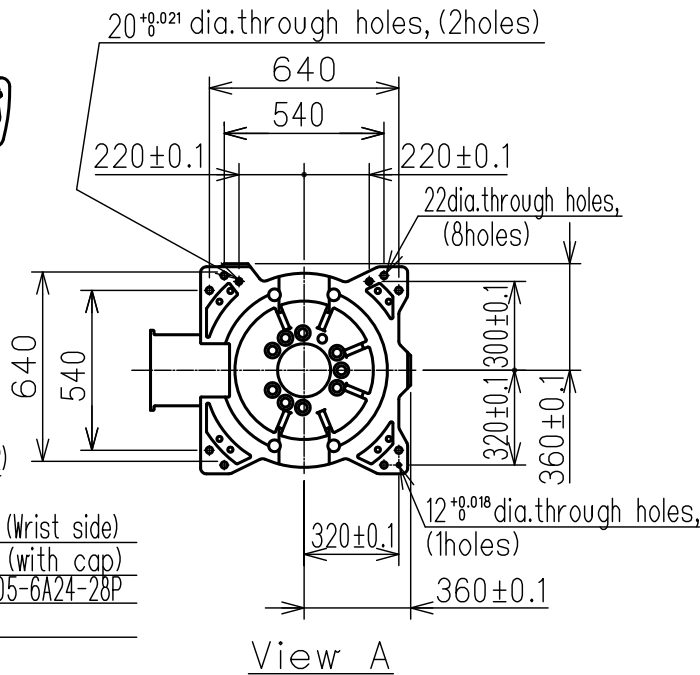
DWG.NO. HW1383259



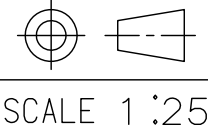
Model		MOTOMAN-MPL300II
Item	Configuration	Articulated Robot
	Degree of Freedom	4
	Payload	300kg
	Repeatability	±0.5 mm
Range of Motion	S-Axis (Turning)	±180°
	L-Axis (Lower Arm)	+90°, -45°
	U-Axis (Upper Arm)	+15.5°, -120°
	T-Axis (Twist)	±360°
Max Speed	S-Axis	1.57rad/s (90° /s)
	L-Axis	1.75rad/s (100° /s)
	U-Axis	1.92rad/s (110° /s)
	T-Axis	3.40rad/s (195° /s)
Allowable Inertia (GD²/4)	T-Axis	140kg·m²
Approx. Robot mass		1820kg
Ambient Conditions	Temperature	0~45° C
	Humidity	20~80%RH (Non-condensing)
	Vibration	Less than 4.9m/s² (0.5G)
	Others	•Free from explosive or corrosive gas and liquid •Free from dust, oil, of water •Free from electrical noise
Power Requirements		9.5KVA

SI units are used in this table.
However, gravitational units are uses in ().
Repeatability is conformed to ISO 9283.

Type	Note
YR-MPL0300-J00	Standard



Note:
1.All rights reserved.
2.Please note that the data is subject to be deleted without advance notice.
3.No warranty is given in relation to the data including the specification.
4.We are not responsible for any damages or loss caused by the use of the data.



YASKAWA
株式会社 安川電機

Reference Drawing

TITLE MOTOMAN-MPL300II
DIMENSION DIAGRAM

DWG.NO. HW1383259
FOR STUDY PURPOSE ONLY

SIZE A3