

MOTOMAN ME1000

Heavy-payload horizontal articulated Robot

The powerful MOTOMAN ME1000 is characterized by its innovative design as a horizontal articulated robot with 6 axes. The compact robot was specifically developed for the horizontal transportation of heavy loads of up to 1000 kg.

Compared to conventional models with a 6-axis vertical articulated joint, the ME1000 has a lower product mass which results in significantly reduced energy consumption.

The energy-saving design was awarded with the Japanese "Energy Conservation Grand Prize".

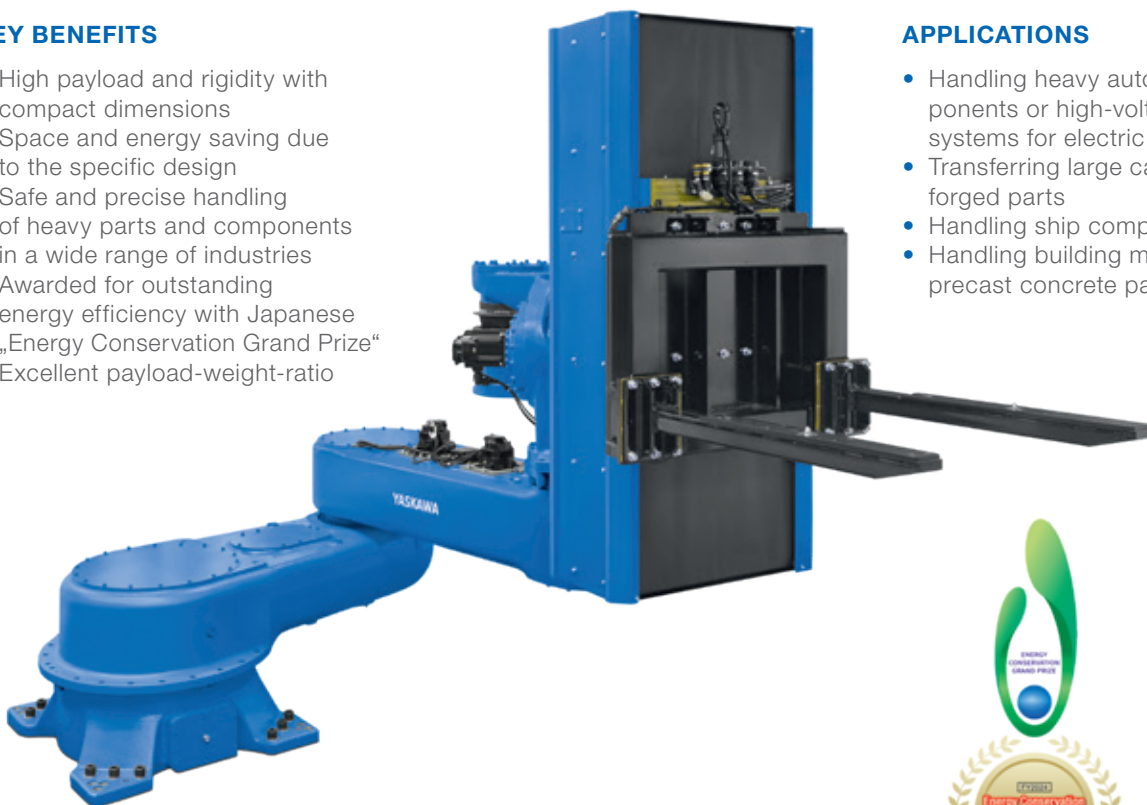
This versatile robot with a minimal footprint is ideal for handling and assembling heavy workpieces such as automotive components, battery trays for electric vehicles, as well as for handling construction material or even packed heavy-duty pallets in logistics and e-commerce.

KEY BENEFITS

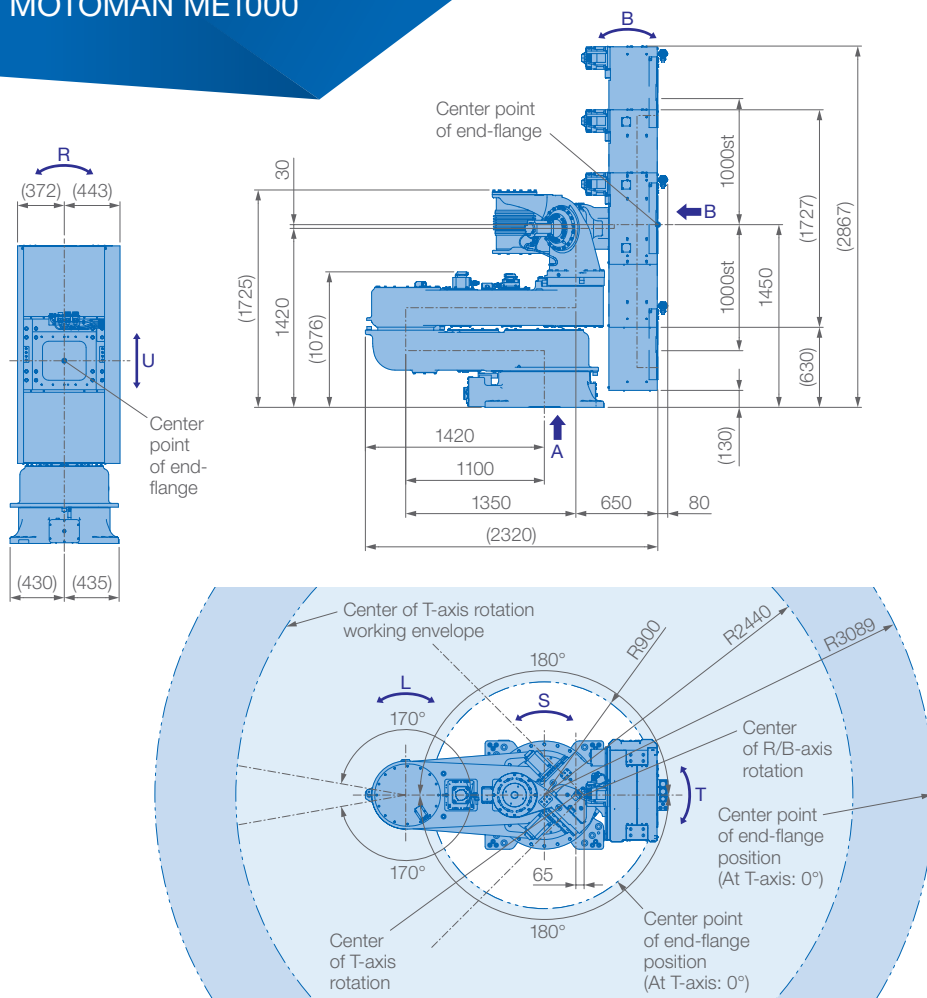
- High payload and rigidity with compact dimensions
- Space and energy saving due to the specific design
- Safe and precise handling of heavy parts and components in a wide range of industries
- Awarded for outstanding energy efficiency with Japanese „Energy Conservation Grand Prize“
- Excellent payload-weight-ratio

APPLICATIONS

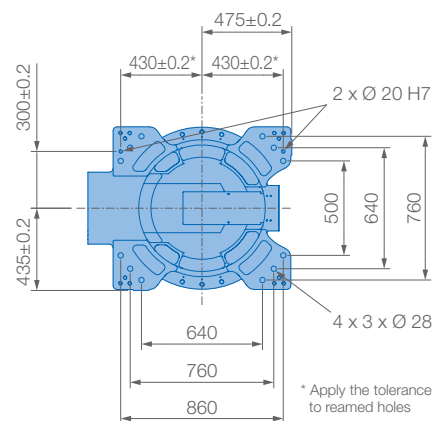
- Handling heavy automotive components or high-voltage storage systems for electric vehicles
- Transferring large cast and forged parts
- Handling ship components
- Handling building materials and precast concrete parts



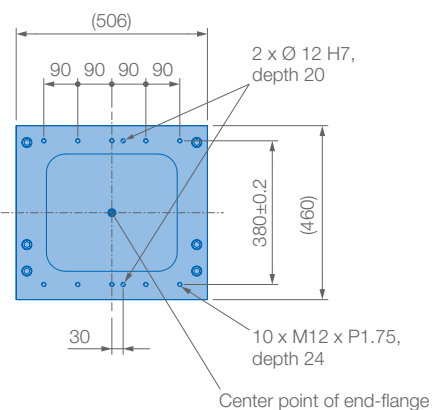
Controlled by
YRC1000



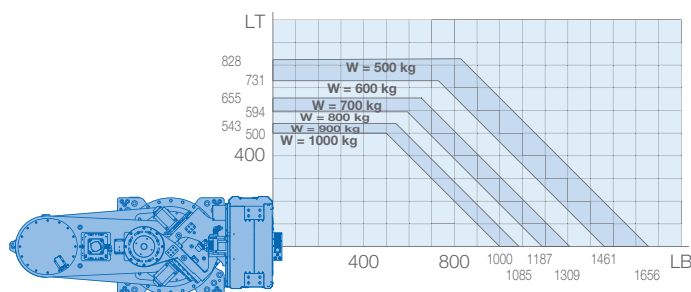
View A



View B



Allowable wrist load



Mounting option: Floor

No protection class



Specifications ME1000					
Axes	Maximum motion range [°]	Maximum speed [°/sec.]	Allowable moment [Nm]	Allowable moment of inertia [kg · m ²]	Controlled axes
S	±180	45	End-flange center point reference (front to back) 9800	—	6
L	±170	60		—	Max. payload [kg]
U	±1000 mm	300 mm/sec.		—	1000
R	±5	10		—	Repeatability [mm]
B	+5/−3	10		—	0.1
T	±90	50	—	3320	Max. working range R [mm]
					2440
					Temperature [°C]
					0 to +45
					Humidity [%]
					20 – 80
					Weight [kg]
					3250
					Power supply, average [KVA]
					5.0

Robotics Division

YASKAWA Europe GmbH
Yaskawastraße 1
85391 Allershausen, Germany
Tel. +49 (0) 8166/90-0
Fax +49 (0) 8166/90-103
robotics@yaskawa.eu
www.yaskawa.eu

YASKAWA Headquarters Academy and Sales Office

YASKAWA Europe GmbH
Philipp-Reis-Straße 6
65795 Hattersheim am Main, Germany
Tel. +49 (0) 6196/77725-0
Fax +49 (0) 6196/77725-39

All drawing dimensions in mm. Technical data may be subject to change without previous notice. Please request detailed drawings at robotics@yaskawa.eu.

YR-1-06SXK1000-A00
A-05-2025, A-No. 231069

YASKAWA