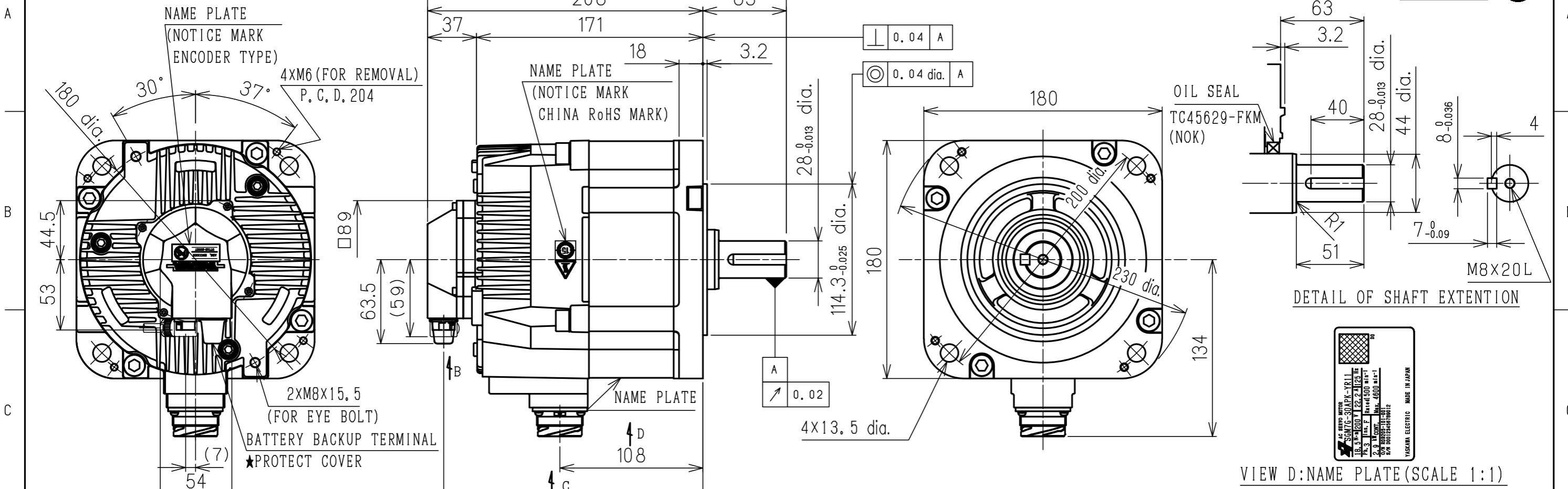


DWG.NO. HW1386426



VIEW D: NAME PLATE (SCALE 1:1)

NOTES

- ALL DIMENSIONS ARE IN MILLIMETERS.
- MOTOR SPECIFICATION : 900-238-229
- ENCODER TYPE : UTTAH-B20RT
- DEGREES OF PROTECTION: IP67 EXCEPT FOR SHAFT OPENING.
- VIBRATION : 15µm OR BELOW.
- MOTOR WITH OIL SEAL SHOULD BE OPERATED UNDER THE FOLLOWING CONDITIONS.
 - TAKE CARE THAT METAL POWDER OF THE GEAR DOES NOT COME TO THE OIL SEAL LIP PART.
 - USE IT IN SUCH A STATE THAT GREASE IS SUPPLIED TO THE OIL SEAL LIP PART.
- DIMENSIONS OF THE KEYWAY ARE CONFORMED TO JIS(JAPANESE INDUSTRIAL STANDARD) NO. B1301 "SUNK KEYS AND THEIR CORRESPONDING KEYWAYS (CLOSE KEYS)".
- RESIN RETAINER AND UREA TYPE GREASE IS USED FOR BEARING OF MOTOR AND ENCODER.
- WHEN CONNECTING THE BACKUP BATTERY, REMOVE THE PROTECT COVER (PART ★) AND CONNECT.
- HOLDING BRAKE IS FOR POSITION HOLDING. DO NOT USE TO STOP THE MOTOR.

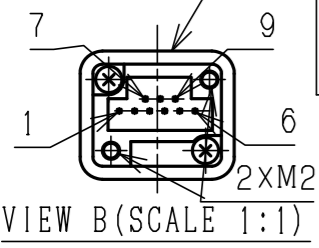
MATES WITH
 APPLY HOUSING
 HOUSING: 54346-0070
 CONTACT (APART): 56161-8181
 CONTACT (CHAIN): 56161-8081

BATTERY BACKUP TERMINAL CONNECTION (NICHIFU)

PC-2005M BATTERY (+)
 PC-2005F BATTERY (-)

RECEPTACLE: JL10-2E22-A6PCE

MATES WITH
 APPLY PLUG
 PLUG: JL10-8A22-A6SE-EB (ANGLE)

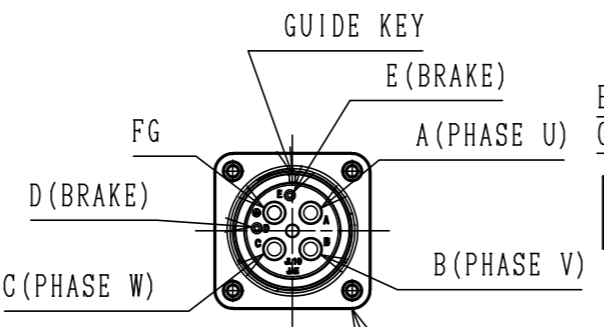


ENCODER TERMINAL CONNECTION (MOLEX)

PIN	SIGNAL
1	FG
2	PS2 (SLAVE)
3	PG0V
4	PS1 (MASTER)
5	*PS1 (MASTER)
6	PG5V
7	*PS2 (SLAVE)
8	BAT0V
9	BAT3.6V

MOTOR TERMINAL CONNECTION (JAE)

PIN	SIGNAL
A	PHASE U
B	PHASE V
C	PHASE W
D	BRAKE
E	BRAKE
FG	FRAME GROUND



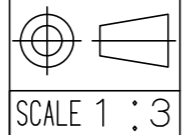
VIEW C (SCALE 1:2)

HOLDING BRAKE SPECIFICATIONS			
STATIC FRICTION TORQUE N·m	EMERGENCY BREAKING TORQUE N·m	VOLTAGE V	CAPACITY W
28.4 OR MORE	44 OR LESS	DC24V	18.5

TYPE	RATED OUTPUT kW	RATED TORQUE N·m	TIME RATING	RATED SPEED min ⁻¹	MAX SPEED min ⁻¹	RATED CURRENT A	WEIGHT kg	ALLOWABLE RADIAL LOAD N	ALLOWABLE THRUST LOAD N
SGM7G-30APK-YR11	2.9	18.5	CONT.	1500	4600	22.2	19.5	980 (SHAFT END)	490

Note:
 1. All rights reserved.
 2. Please note that the data is subject to be deleted without advance notice.
 3. No warranty is given in relation to the data including the specification.
 4. We are not responsible for any damages or loss caused by the use of the data.

FOR STUDY PURPOSE ONLY



Reference Drawing

TITLE FOR MOTOMAN
 DIMENSIONS OF AC SERVOMOTOR

DRWN DATE Apr.25'19

DWG.NO. HW1386426

SIZE A3