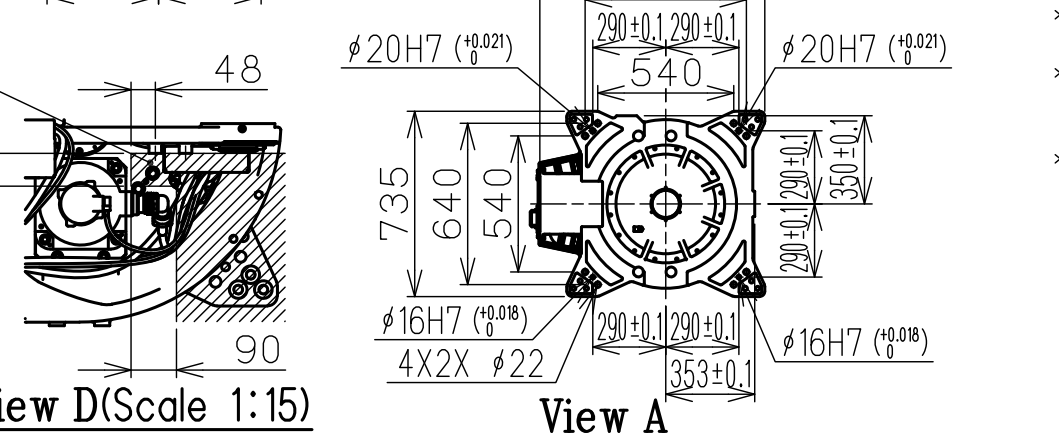
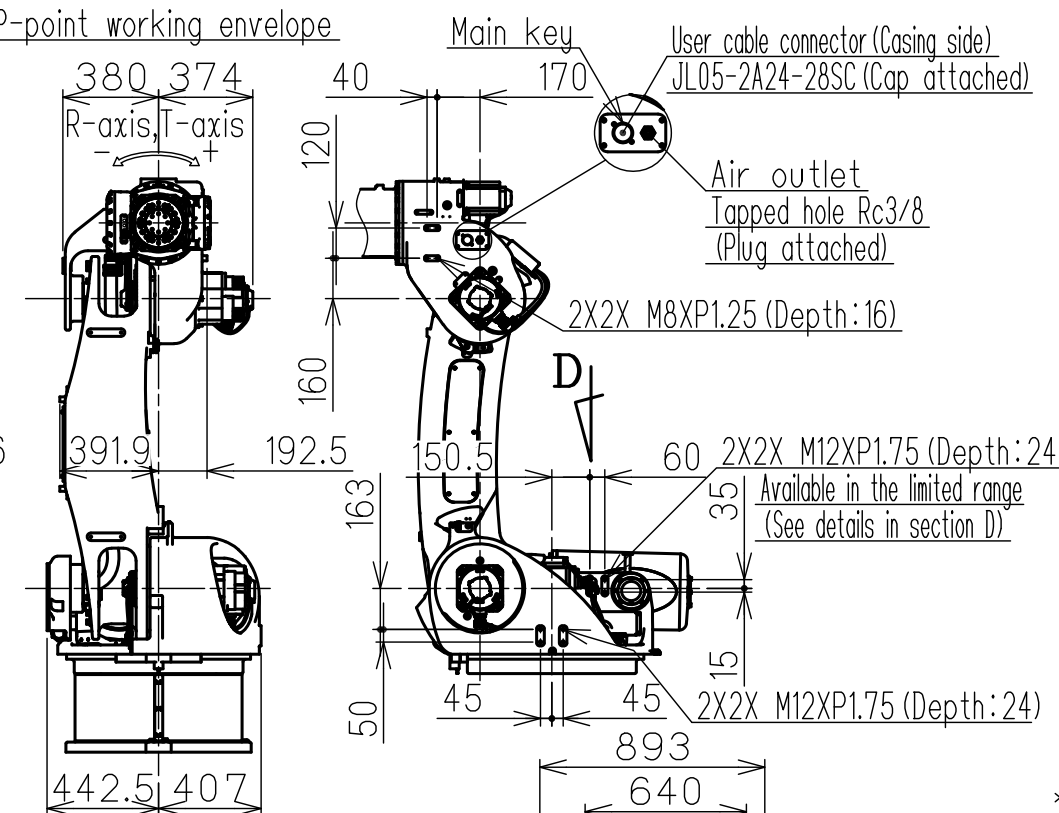
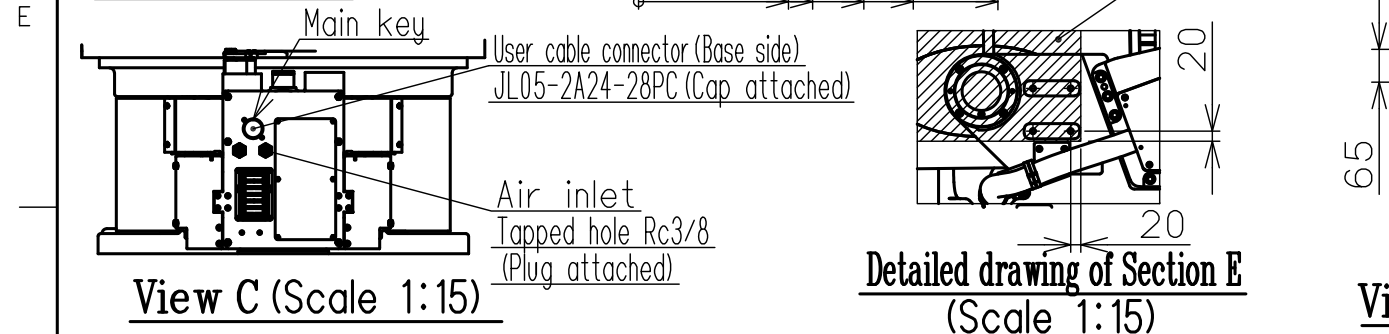
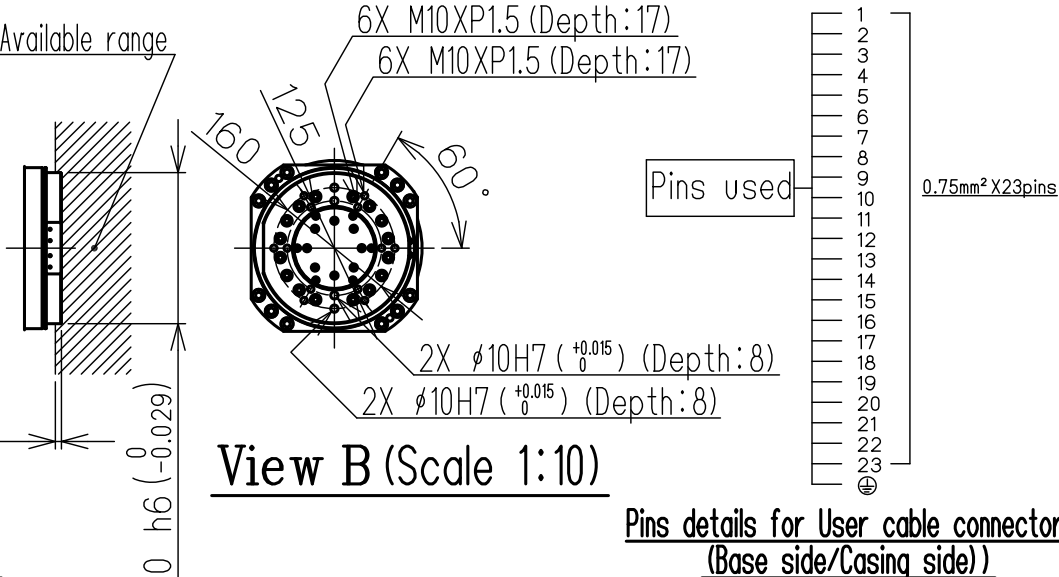
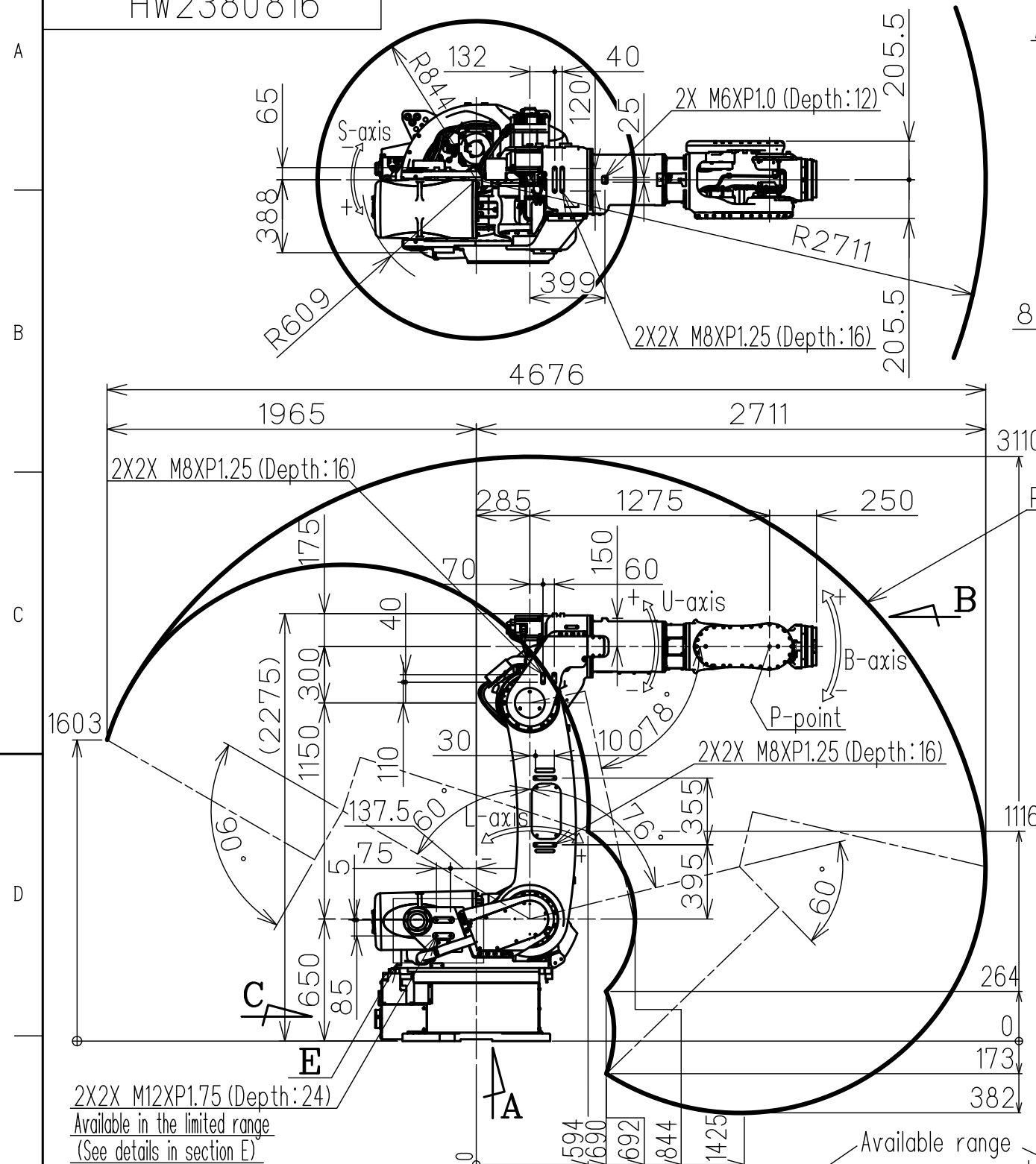


DWG.NO. HW2380816



Item	Model	MOTOMAN-GG250
Configuration	Vertically articulated	
Degree of freedom	6	
Payload	Wrist part	250 kg
	U-arm	30 kg
Repeatability (*1)	0.025 mm	
Range of motion	S-Axis	-180° - +180°
	L-Axis	-60° - +76°
	U-Axis	-78° - +90°
	R-Axis	-210° - +210°
	B-Axis	-130° - +130°
	T-Axis	-360° - +360°
Maximum speed (*2)	S-Axis	1.40 rad/s, 80°/s
	L-Axis	1.31 rad/s, 75°/s
	U-Axis	1.40 rad/s, 80°/s
	R-Axis	2.62 rad/s, 150°/s
	B-Axis	2.62 rad/s, 150°/s
	T-Axis	3.32 rad/s, 190°/s
Allowable moment	R-Axis	1372N·m (140kgf·m)
	B-Axis	1372N·m (140kgf·m)
	T-Axis	735N·m (75kgf·m)
Allowable inertia (GD²/4)	R-Axis	209.8 kg·m²
	B-Axis	209.8 kg·m²
	T-Axis	162.1 kg·m²
Mass	1640 kg	
Protection rating	Body:IP54 Wrist part:IP65	
Mounting method	Floor-mounted	
Ambient conditions	Temperature	0℃ - +45℃
	Humidity	20%RH - 80%RH (No condensing)
	Vibration acceleration	4.9m/s² (0.5G) or less
	Altitude	1000m or less
	Flatness for installation	0.5mm or less
Others	<ul style="list-style-type: none"> Free from dirt, dust, oil soot, or water. Free from explosive and corrosive gas or liquid. Free from excessive electrical noise (plasma) Free from strong magnetic field. 	
Power requirement (*3)	5.0KVA	
Applicable controller	YRC1000	

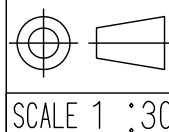
- *1 Repeatability conforms to ISO 9283.
 *2 The maximum speed in this table is the available maximum value and will vary depending on the load, posture, or range of motion.
 *3 The power requirement value is obtained using YASKAWA's in-house measurement conditions and will vary depending on the load, motion pattern, or cycle time.
 *4 The posture in this drawing is in the home position.

Units:mm

Type	Specification
YR-1-06VXG250-A00	Standard

Note:
 1.All rights reserved.
 2.Please note that the data is subject to be deleted without advance notice.
 3.No warranty is given in relation to the data including the specification.
 4.We are not responsible for any damages or loss caused by the use of the data.

FOR STUDY PURPOSE ONLY



YASKAWA
 株式会社 安川電機

Reference Drawing

TITLE MOTOMAN-GG250
 DIMENSION DIAGRAM

DRWN DATE Jul.18.' 24

DWG.NO. HW2380816

SIZE A 3