

Dual-MOTOEyeLT

Lasertracking with two robots



The Dual-MOTOEyeLT software allows seam tracking and seam optimisation in real time with two robots.

For this purpose, the robot are equipped with a laser camera (preceding the tool) from different manufacturers.

Via the rapid Ethernet connection, the Dual-MOTOEyeLT software controls the communication between the components.

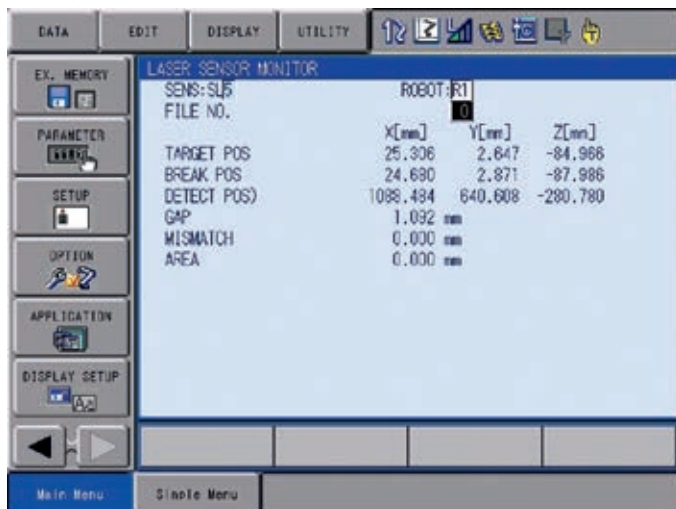
In order to achieve optimal welding results, the information from the camera is then processed by the software, allowing necessary adaptations of the robot path, robot velocity as well as process parameters.

Thanks to preconfigured macros programming is very simple. Moreover, the 40 files for the individual adjustment of the tracking parameters make system configuration easier.

Additional advantages of Dual-MOTOEyeLT are the easy calibration of the sensor with the TCP as well as the use of Standard CIO programs (for digital and analogue power source control).

KEY BENEFITS

- Start and target point search
- Adaptive welding – adaptation of e. g. robot velocity and TCP-position
- Support of seam tracking sensors from different manufacturers
- Reduction of reworks
- Increased number of faultless work pieces
- Increased cost-effectiveness
- Simple programming with preconfigured macros
- Synchronous tracking with external axis and/or base axes
- 40 Files for the Tracking parameter adjustment
- Simple calibration of the sensor with the TCP
- Use of Standard CIO programs (for digital and analogue power source control)

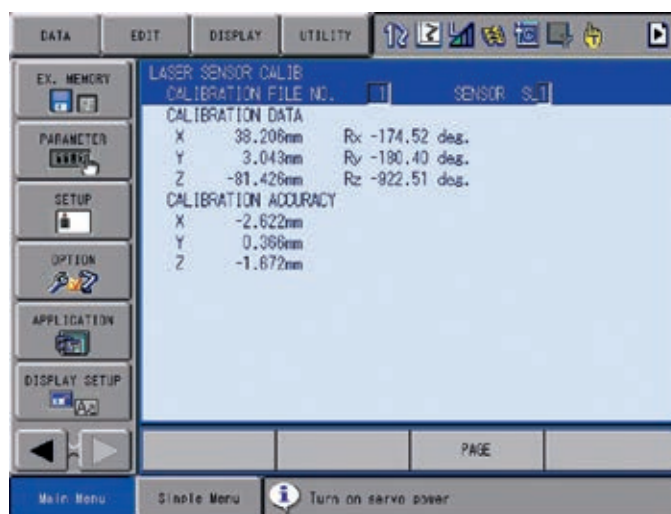


Lasersensor monitor

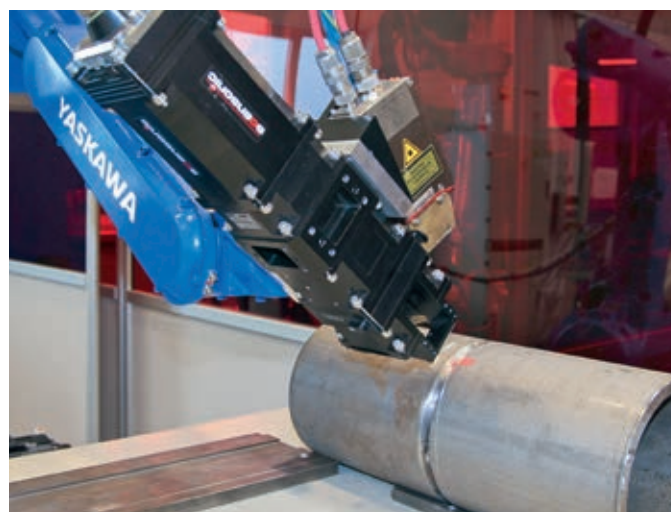
Restriction:

If it is necessary/mandatory to adapt process parameters online, a additional parallel job must be created for the digital job switching on the power source, via which the digital outputs are switched depending on a changing control voltage.

Lasersensor calibration



Seamtracking with MIG/MAG torch



Seamtracking with laserwelding unit

Important: For each control unit, this function can be used for (only) one robot. Please request details at robotics@yaskawa.eu.



Robotics Division

YASKAWA Europe GmbH
 Yaskawastraße 1
 85391 Allershausen, Germany
 Tel. +49 (0) 8166/90-0
 Fax +49 (0) 8166/90-103
robotics@yaskawa.eu
www.yaskawa.eu

YASKAWA Headquarters Academy and Sales Office

YASKAWA Europe GmbH
 Philipp-Reis-Straße 6
 65795 Hattersheim am Main, Germany
 Tel. +49 (0) 6196/77725-0
 Fax +49 (0) 6196/77725-39

All drawing dimensions in mm. Technical data may be subject to change without previous notice. Please request detailed drawings at robotics@yaskawa.eu.

Dual-MOTOEyeLT · A-10.2024 · A-No. 231061



YASKAWA